

CITY OF STANWOOD

PUBLIC WORKS DEPARTMENT

DEPOT PARK

CITY OFFICIALS:

MAYOR:

SID ROBERTS

COUNCIL MEMBERS:

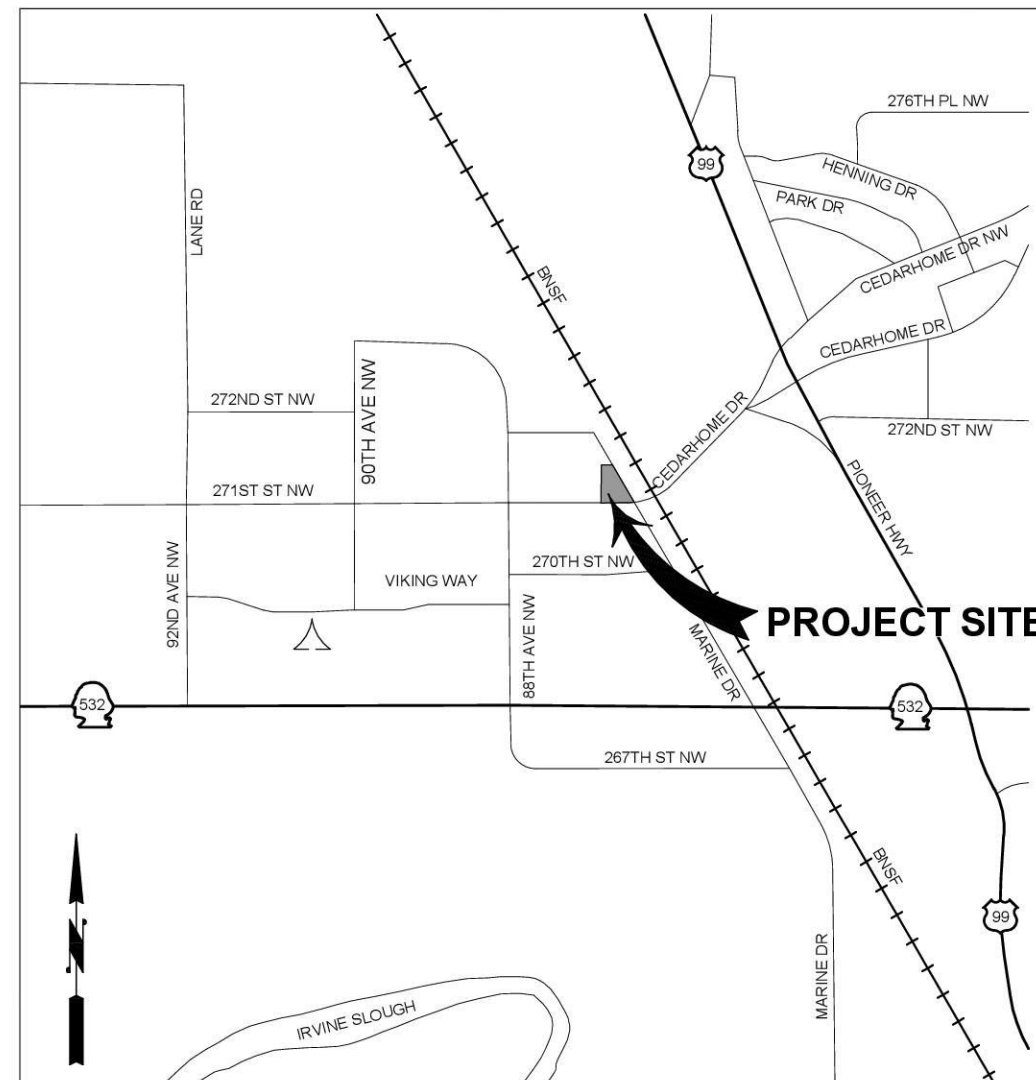
DANI GAUMOND
 EARL COWAN
 DARREN ROBB
 ROBERT 'CHILI' HICKS
 STEVE SHEPRO
 ANDREENA BERGMAN
 JEFF WHEATLEY

CITY ADMINISTRATOR:

SHAWN SMITH, P.E.

APPROVED BY:

KEVIN HUSHAGEN
 PUBLIC WORKS DIRECTOR

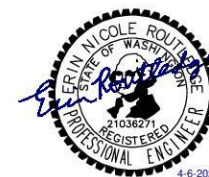


VICINITY MAP
 N.T.S.

SHEET INDEX

DRAWING #	SHEET #	SHEET TITLE
CV1	1	COVER SHEET
LG1	2	LEGEND AND ABBREVIATIONS
SC1	3	SURVEY CONTROL PLAN
SP1	4	SITE PREPARATION AND TESC PLAN
GR1	5	SITE GRADING PLAN
GR2-GR3	6-7	SITE IMPROVEMENT PLANS
UT1	8	UTILITY PLAN AND PROFILE
SF1	9	SITE FURNISHING AND PLANTING PLAN
SFD1	10	SITE FURNISHING DETAILS
MD1-MD4	11-14	MISCELLANEOUS DETAILS
CR1	15	CURB RAMP DETAILS
IL1	16	ILLUMINATION AND ELECTRICAL PLANS AND DETAILS
IL2	17	ELECTRICAL SCHEDULES AND ONE LINE DIAGRAM
IL3	18	ELECTRICAL DETAILS
S1.1	19	SHELTER STRUCTURAL NOTES
S2.1	20	SHELTER FOUNDATION AND ROOF RAIMING PLAN
S3.1	21	SHELTER ELEVATIONS AND DETAILS

Apr 06, 2026 - 12:44pm _jren_X:\Stanwood_City of Projects\2025\0015 - Stanwood 2025 Proj Serv On-Call\0001 - Depot Park Design\CADD\02 - Plan Sheets\2025\0015_CV.dwg Layout Name: CV



Erin Routledge
 Digitally signed by Erin Routledge
 DN: C=US,
 E=erin.routledge@perteet.com,
 O=Periteet, OU=Periteet, CN=Erin
 Routledge
 Date: 2026.04.06 14:52:34 -0700

WATER SYMBOLS

EXIST.	PROP.	DESCRIPTION
		CAP/PLUG
		COUPLING
		GUARD POST
		REDUCER
		THRUST BLOCKING
		WATER METER
		FIRE HYDRANT 2-NOZZLE
		FIRE HYDRANT 3-NOZZLE
		FLANGE/BLIND FL (FL) (BL FL)
		MECHANICAL JOINT (MJ)
		PUSH-ON/HUB
		THREAD
		AIR RELIEF VALVE
		BLOW-OFF VALVE
		BUTTERFLY VALVE
		CHECK VALVE
		WATER VALVE
		PLUG VALVE
		UNDERGROUND WATER LINE PAINT

GAS/POWER/TELEPHONE SYMBOLS

EXIST.	PROP.	DESCRIPTION
		GAS METER
		GAS VALVE
		PAD MOUNTED TRANSFORMER
		POWER VAULT
		TRANSMISSION TOWER
		UTILITY POLE
		UTILITY POLE ANCHOR
		TELEPHONE RISER
		TELEPHONE VAULT
		DECORATIVE STREET LIGHT
		ELECTRICAL VAULT
		UNDERGROUND POWER LINE PAINT

SURVEY SYMBOLS

EXIST.	DESCRIPTION
	RECOVERED REBAR AS NOTED (MAY 2023)
	SET 5/8"x 24" REBAR WITH CAP STAMPED "METRON LS 28067" (MAY 2023)
	SET LEAD IN TACK WITH TAG "METRON LS 28067" (MAY 2023)

SIGNALIZATION SYMBOLS

EXIST.	PROP.	DESCRIPTION
		AERIAL DISCONNECT
		AERIAL TERMINAL COMPARTMENT
		DIPOLE DETECTOR
		QUADRUPOLE DETECTOR
		ROUND LOOP DETECTOR
		PEDESTRIAN DETECTOR
		INDICATOR LIGHT
		OPTICOM SENSOR
		OPTICOM SENSOR W/ INDICATOR LIGHTS
		FLASHING WARNING SYSTEM
		JUNCTION BOXES (TYPE I, II, III)
		PEDESTRIAN PUSHBUTTON POST W/ PUSHBUTTON
		PEDESTRIAN SIGNAL HEAD
		SIGNAL POLE NOTE
		R/R CROSSING GATE
		R/R CROSSING SIGNAL
		SIGNAL CONTROLLER
		SIGNAL LOAD CENTER
		STREET LIGHT ASSEMBLY
		TRAFFIC SIGN-BRIDGE
		TRAFFIC SIGN-CANTILEVERED
		TRAFFIC SIGN-SINGLE POST
		TRAFFIC SIGN-DOUBLE POST
		TRAFFIC SIGNAL POLE
		TRAFFIC SIGNAL POLE W/ LUMINAIRE
		TRAFFIC SIGNAL SUPPORT POLE
		VEHICLE SIGNAL HEAD
		VEHICLE SIGNAL HEAD W/ ARROW INDICATOR
		WIRE NOTE

SANITARY/STORM SEWER SYMBOLS

EXIST.	PROP.	DESCRIPTION
		SANITARY SEWER CLEAN OUT
		SANITARY SEWER MANHOLE
		STORM DRAIN CATCH BASIN (TYPE 1)
		STORM DRAIN CULVERT
		STORM DRAIN CATCH BASIN (TYPE 2)
		STORM DRAIN MANHOLE
		ENERGY DISSIPATOR
		OVERFLOW STRUCTURE
		CLEANOUT
		MONITOR WELL

CHANNELIZATION SYMBOLS

EXIST.	PROP.	DESCRIPTION
		BIKE PATH
		HANDICAP SYMBOL
		H.O.V. LANE SYMBOL
		ONLY
		RAILROAD CROSSING
		SCHOOL
		STOP
		STRAIGHT ARROW
		LT.RT.STR. ARROW
		LEFT-RIGHT ARROW
		2-WAY LEFT TURN
		LEFT TURN ARROW
		RIGHT TURN ARROW
		LEFT-STRAIGHT ARROW
		RIGHT-STRAIGHT ARROW
		LANE MARKER TYPE I
		LANE MARKER TYPE II

SURFACE FEATURES/LANDSCAPING

EXIST.	PROP.	DESCRIPTION
		2 POST INFORMATION SIGN
		SINGLE POST TRAFFIC SIGN
		MAIL BOX
		RIP RAP
		ROCKERY
		SHRUB
		SIGN
		TREE (CONIFER)
		TREE (DECIDUOUS)
		FENCE POST
		CURB RAMP

ABBREVIATIONS

ABBREVIATION	DESCRIPTION
ADJ	ADJUST
ALIGN	ALIGNMENT
ALT	ALTERNATE
AP	ANGLE POINT
APPROX	APPROXIMATELY
ASPH	ASPHALT
AVE	AVENUE
AVG	AVERAGE
BM	BENCH MARK
BOT	BOTTOM
BTWN	BETWEEN
CB	CATCH BASIN
CB1	CATCH BASIN TYPE 1
CB2	CATCH BASIN TYPE 2
CG	CURB & GUTTER
C/L, CL, C	CENTERLINE
COM	COMMON
CONC	CONCRETE
CONN	CONNECTION
CONST	CONSTRUCT
CONT	CONTINUED/CONTINUOUS
DET	DETAIL
DWG	DRAWING
E	EAST, VERTICAL DISTANCE BETWEEN PVI AND ROAD SURFACE
EA	EACH
EL	ELEVATION
EX	EXISTING
FH	FIRE HYDRANT
FT	FEET/FOOT
G	GAS LINE
GE	GROUND ELEVATION
GV	GAS VALVE
HORIZ	HORIZONTAL
HPS	HIGH PRESSURE SODIUM
HT	HEIGHT
IE	INVERT ELEVATION
IN	INCH/INCHES
INT, INTX	INTERSECTION
K	RATE OF VERTICAL CURVATURE (LENGTH (FT) PER % DIFF. IN GRADE)
L	LENGTH OF ARC
LB	POUND
LBS	POUNDS
LF	LINEAL FOOT/FEET
LT	LEFT
LUMINAIRE	LUMINAIRE
MAX	MAXIMUM
MB	MAILBOX
MH	MANHOLE
MIN	MINIMUM
MON	MONUMENT
N	NORTH
NA	NOT APPLICABLE
NAD	NORTH AMERICAN DATUM
NAVD	NORTH AMERICAN VERTICAL DATUM
NO.	NUMBER
N.T.S.	NOT TO SCALE
OPP	OPPOSITE
PC	POINT OF CURVE
PT	POINT OF TANGENT
PVC	POLYVINYL CHLORIDE / POINT OF VERTICAL CURVE
PVI	POINT OF VERTICAL INTERSECTION
PVMT	PAVEMENT
PVT	POINT OF VERTICAL TANGENT
R	RADIUS/RANGE
REF	REFERENCE
RR	RAILROAD
RT	RIGHT
R/W, ROW	RIGHT OF WAY
S	SOUTH
SD	STORM DRAIN
SEC	SECTION
SLJB	STREET LIGHTING JUNCTION BOX
SPEC	SPECIFICATION
STD	STANDARD
STLT	STREET LIGHT
SR	STATE ROUTE
SS	SANITARY SEWER
ST	STREET
STA	STATION
S/W	SIDEWALK
T	TOWNSHIP
TOC	TOP OF CURB
TV	TELEVISION
UTIL	UTILITY
VERT	VERTICAL
W	WEST, WATER LINE
W/	WITH
WA	WASHINGTON
WM	WILLAMETTE PRINCIPAL MERIDIAN

LINE TYPES

LINE TYPE	DESCRIPTION
	SURFACE FEATURES: EXISTING BUILDING LINE
	PROPOSED BUILDING LINE
	EXISTING DITCH
	PROPOSED DITCH
	EXISTING CURB/PAVEMENT/SIDEWALK
	PROPOSED CURB/PAVEMENT/SIDEWALK
	EXISTING FENCE LINE
	PROPOSED FENCE LINE
	EXISTING GRAVEL
	EXISTING GUARDRAIL
	PROPOSED GUARDRAIL
	LAKE/POND
	WETLAND/SWAMP PERIMETER
	RAILROAD
	EXISTING RETAINING WALL
	PROPOSED RETAINING WALL
	RIVERBANK/ShORELINE
	VEGETATION LINE
	SURVEY: EXISTING CENTERLINE
	PROPOSED CENTERLINE
	EXISTING CONTOUR (INTERMEDIATE)
	EXISTING CONTOUR (INDEX)
	PROPOSED CONTOUR (INTERMEDIATE)
	PROPOSED CONTOUR (INDEX)
	EXISTING EASEMENT LINE
	PROPOSED EASEMENT LINE
	EXISTING PROPERTY LINE
	EXISTING RIGHT OF WAY CENTERLINE
	EXISTING RIGHT OF WAY
	EXISTING RIGHT OF WAY (USED)
	PROPOSED RIGHT OF WAY
	SECTION LINE
	QUARTER SECTION LINE
	16TH SECTION LINE
	UTILITIES (EXISTING) EXISTING GAS LINE
	EXISTING AERIAL POWER
	EXISTING BURIED POWER
	EXISTING STORM DRAIN
	EXISTING FORCE MAIN
	EXISTING SANITARY SEWER
	EXISTING AERIAL TELEPHONE
	EXISTING BURIED TELEPHONE
	EXISTING WATER LINE
	UTILITIES (PROPOSED) PROPOSED GAS LINE
	PROPOSED AERIAL POWER
	PROPOSED BURIED POWER
	PROPOSED STORM DRAIN
	PROPOSED FORCE MAIN
	PROPOSED SANITARY SEWER
	PROPOSED AERIAL TELEPHONE
	PROPOSED BURIED TELEPHONE
	PROPOSED WATER LINE
	CUSTOM: CUT LINE
	FILL LINE
	SILT FENCE
	HVSF HIGH VISIBILITY SILT FENCE
	CONSTRUCTION FENCE



Apr 06, 2026 - 11:03am hmcmaester X:\Stanwood_City of Projects\20250015 - Stanwood 2025 Prof Surv On-Call\0001 - Depot Park Design\CADD\02 - Plan Sheets\20250015_LG.dwg Layout Name: LG1

No.	Date	Revision	By	Appr.

PERTEET
 2707 COLBY AVENUE, SUITE 900
 EVERETT, WA 98201
 425.252.7700 | 800.615.9900

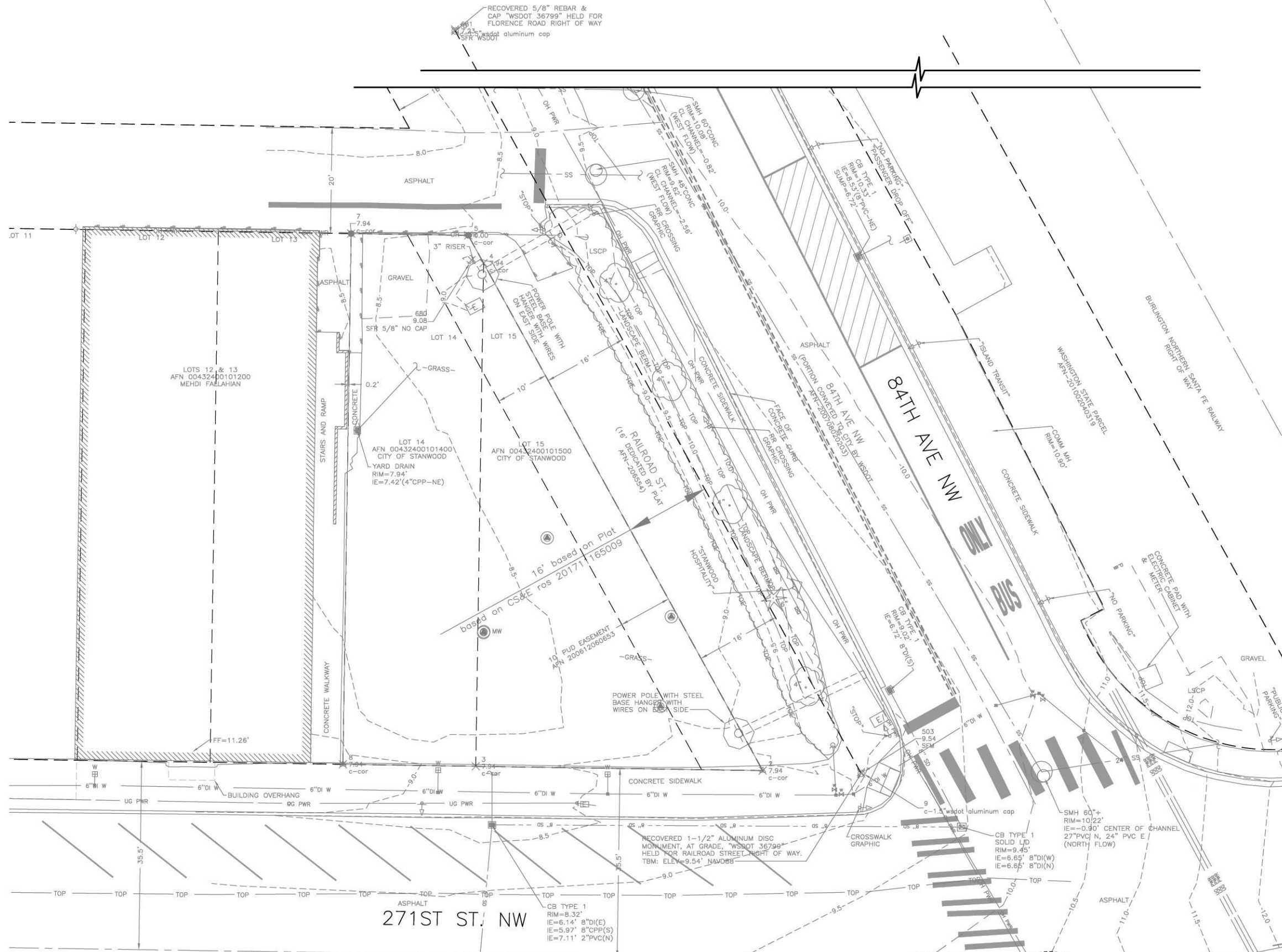
811
 Know what's below.
 Call before you dig.

Drawn By	Date
MC	4/2026
Designed By	
JR	4/2026
Checked By	
JR	4/2026
Approved By	
---	4/2026

CITY OF STANWOOD
 DEPOT PARK
LEGEND AND ABBREVIATIONS

Drawing No.	LG1
Sheet No.	2
of Total	21

SEC. 19, T. 32 N, R.4 E, W.M.



LEGAL DESCRIPTION
 LOTS 14 AND 15 IN BLOCK 1 OF "FIRST ADDITION TO EAST STANWOOD", ACCORDING TO THE PLAT THEREOF RECORDED IN VOLUME 9 OF PLATS ON PAGE 53, RECORDS OF SNOHOMISH COUNTY, WASHINGTON. (LEGAL DESCRIPTION FROM STATUTORY WARRANTY DEED, AFN 202112200631)

HORIZONTAL AND VERTICAL DATUMS
 VERTICAL DATUM BASED ON NAVD 88 (MEAN SEA LEVEL) BASED ON NGS MONUMENT 944 8436 TIDAL 4, ELEV.=9.50'
 HORIZONTAL DATUM IS BASED ON WASHINGTON NORTH ZONE SPC NORTH AMERICAN DATUM 1983/2011 GEODETIC PROJECTION BASED ON WSDOT SURVEY CONTROL NETWORK

UNDERGROUND UTILITY NOTE:
 UNDERGROUND UTILITY LOCATIONS FOR WATER, SEWER, STORM, ELECTRIC SERVICE, COMMUNICATION SERVICES AND GAS, AS SHOWN HEREON, ARE BASED UPON, "CLEARMARK" UTILITY LOCATE SERVICES AND THE CITY OF STANWOOD GIS DATA.
 THE USE OF THIS MAP FOR THE PRECISE LOCATION OF THE UTILITY LINES IS NOT WARRANTED OR GUARANTEED.
 RCW 19.122 REQUIRES 48 HOUR NOTIFICATION PRIOR TO UNDERGROUND CONSTRUCTION ACTIVITY. CONTACT "CALL BEFORE YOU DIG" UTILITY LOCATE SERVICE AT 811 OR 1-800-424-5555.

Apr 06, 2026 - 11:04am hmcmaester X:\Stanwood_City of Projects\20250015 - Stanwood 2025 Prof Surv On-Call\0001 - Depot Park Design\CADD\02 - Plan Sheets\20250015_SC.dwg Layout Name: SC1

No.	Date	Revision	By	Appr.

PERTEET
 2707 COLBY AVENUE, SUITE 900
 EVERETT, WA 98201
 425.252.7700 | 800.615.9900

811
 Know what's below.
 Call before you dig.

ERIN NICOLE ROULETTE
 STATE OF WASHINGTON
 REGISTERED PROFESSIONAL ENGINEER
 21038271
 4-6-2026

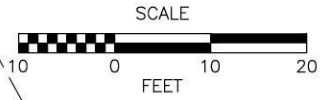
Drawn By	Date
MC	4/2026
Designed By	
JR	4/2026
Checked By	
ER	4/2026
Approved By	
ER	4/2026

Project Number: 20250015.0001

CITY OF STANWOOD
 DEPOT PARK
SURVEY CONTROL PLAN

Drawing No.	SC1
Sheet No.	3
of Total	21





CONSTRUCTION NOTES:

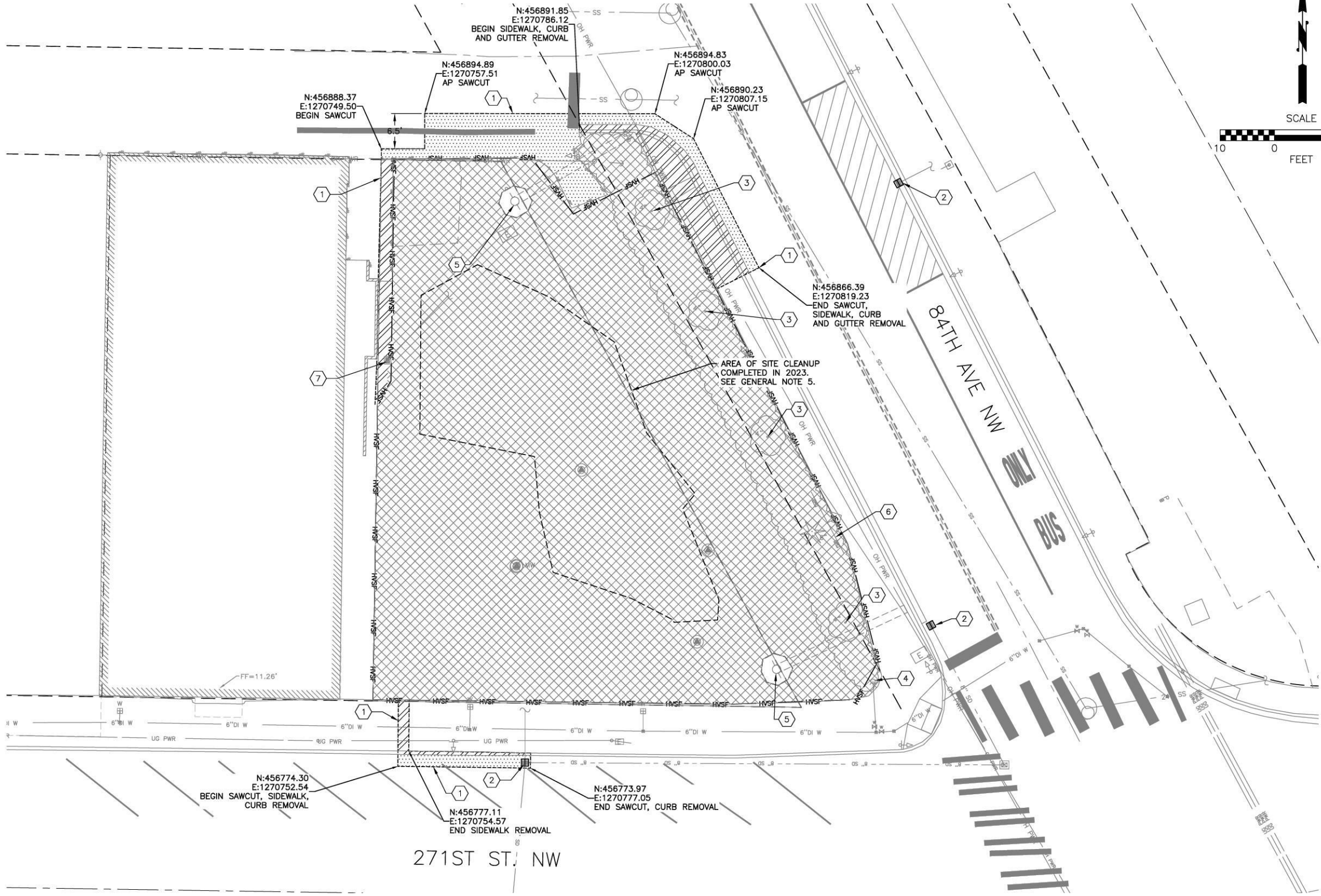
- 1 SAWCUTTING EXISTING PAVEMENT.
- 2 INSTALL STORM DRAIN INLET PROTECTION, PER WSDOT STD. PLAN 1-40.20.
- 3 REMOVE TREE(S).
- 4 PROTECT AND MAINTAIN EXISTING HYDRANT.
- 5 PROTECT AND MAINTAIN EXISTING POWER POLE AND STEEL BASE.
- 6 REMOVE AND SALVAGE EXISTING HOSPITALITY SIGN. PAID FOR AS REMOVAL OF STRUCTURES AND OBSTRUCTIONS. SEE SPECIAL PROVISION 3-02.
- 7 REMOVE EXISTING DRAINAGE STRUCTURE. PLUG AND ABANDON EXISTING PIPE.

GENERAL NOTES:

- 1. STORM DRAIN INLET PROTECTION SHALL BE INSTALLED IN ALL NEW CATCH BASINS AT THE TIME OF INSTALLATION AND IN ALL EXISTING CATCH BASINS 300' DOWNSTREAM BEFORE COMMENCING WORK PER THESE PLANS. SEE WSDOT STANDARD SPECIFICATION SECTION 8-01.3(9)D.
- 2. THE CONTRACTOR SHALL KEEP A MINIMUM 5 FOOT WIDE ACCESSIBLE PEDESTRIAN PATHWAY AT ALL TIMES AND PROTECT AND MAINTAIN PEDESTRIAN ACCESS TO BUILDING DOORWAYS DURING BUSINESS HOURS.
- 3. SEE ILLUMINATION PLANS FOR ILLUMINATION REMOVALS, MODIFICATIONS, AND PROTECTION OF EXISTING FACILITIES.
- 4. SEE DWG. NO. GR2 FOR SIGN RELOCATIONS.
- 5. SEE SPECIAL PROVISIONS APPENDIX F FOR SITE CLEANUP REPORTS.
- 6. TEMPORARY EROSION/WATER POLLUTION MEASURES SHALL BE REQUIRED IN ACCORDANCE WITH THE STORMWATER MANAGEMENT MANUAL FOR WESTERN WASHINGTON.
- 7. A PRECONSTRUCTION MEETING SHALL BE HELD WITH THE CITY PRIOR TO THE START OF CONSTRUCTION.

LEGEND:

- INLET PROTECTION
- SAWCUTTING EXISTING PAVEMENT
- REMOVE/ABANDON EXISTING PIPE
- HIGH VISIBILITY SILT FENCE, PER WSDOT STD. PLAN 1-30.17
- CLEARING AND GRUBBING
- 12" ROADWAY EXCAVATION
- REMOVE EXISTING CEMENT CONC. SIDEWALK AND CEMENT CONC. CURB AND GUTTER



Apr 06, 2026 - 11:05am hmcmaester X:\Stanwood_City of Projects\20250015 - Stanwood 2025 Prof Serv On-Call\0001 - Depot Park Design\CADD\02 - Plan Sheets\20250015_SP.dwg Layout Name: SP1

No.	Date	Revision	By	Appr.

PERTEET
 2707 COLBY AVENUE, SUITE 900
 EVERETT, WA 98201
 425.252.7700 | 800.615.9900

811
 Know what's below.
 Call before you dig.



Drawn By	Date
MC	4/2026
Designed By	
JR	4/2026
Checked By	
ER	4/2026
Approved By	
ER	4/2026

Project Number
20250015.0001

CITY OF STANWOOD
 DEPOT PARK
 SITE PREPARATION AND
 TESC PLAN

Drawing No.	SP1
Sheet No.	4
of Total	21

SEC. 19, T. 32 N, R.4 E, W.M.

GENERAL NOTES:

1. SEE DWG. NO. CR1 FOR CURB RAMP TERMINOLOGY, LEGEN AND DETAILS.

CURB RAMP TERMINOLOGY KEY

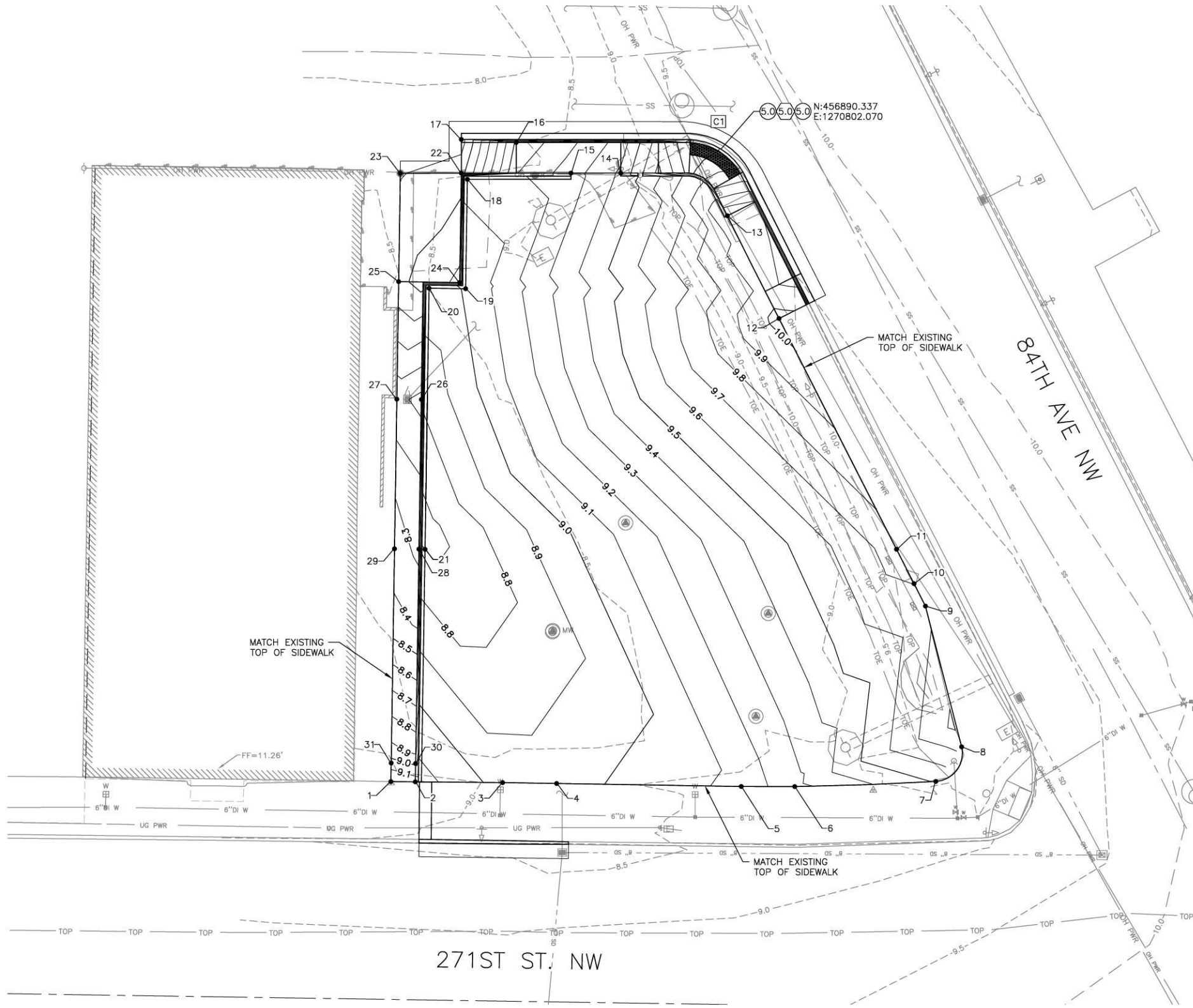
(X-X) TURNING SPACE LENGTH (FEET)

(X-X) RAMP LENGTH (FEET)

NORTHING/EASTING ARE TO CENTER OF RAMP AT THE FACE OF CURB

CURB RETURN TABLE

POINT	NORTHING/EASTING	FLOWLINE ELEVATION	CURVE GEOMETRY
PC STA	N:456886.593, E:1270805.672	9.63	$\Delta = 63^\circ 33' 36''$
1/4	N:456888.960, E:1270803.839	9.57	R= 10.5'
1/2	N:456890.337, E:1270802.070	9.50	T= 6.51'
3/4	N:456891.511, E:1270799.415	9.41	L= 11.65'
PT STA	N:456891.912, E:1270796.540	9.38	



POINT TABLE				
POINT NO	NORTHING	EASTING	ELEV	ELEV LOCATION
1	456786.609	1270747.962	9.21	BACK OF WALK/MATCH EXISTING
2	456786.574	1270751.962	9.15	BACK OF WALK/MATCH EXISTING
3	456786.443	1270766.279	8.96	BACK OF WALK/MATCH EXISTING
4	456786.300	1270775.138	8.95	BACK OF WALK/MATCH EXISTING
5	456785.808	1270805.408	9.51	BACK OF WALK/MATCH EXISTING
6	456785.786	1270814.169	9.51	BACK OF WALK/MATCH EXISTING
7	456786.630	1270837.309	9.51	PC/MATCH EXISTING
8	456792.305	1270841.541	9.73	PT/MATCH EXISTING
9	456815.388	1270835.604	9.67	BACK OF WALK/MATCH EXISTING
10	456819.069	1270833.731	9.70	BACK OF WALK/MATCH EXISTING
11	456824.706	1270830.862	9.75	BACK OF WALK/MATCH EXISTING
12	456862.554	1270811.600	10.04	BACK OF WALK/MATCH EXISTING
13	456879.406	1270803.121	9.99	BACK OF WALK/TOP OF CURB
14	456886.403	1270785.655	9.42	BACK OF WALK
15	456886.397	1270777.485	9.25	BACK OF WALK
16	456891.433	1270768.507	9.00	TOP OF CURB/TOP OF RAMP
17	456891.913	1270759.507	8.36	FACE OF CURB/MATCH EXISTING
18	456885.383	1270760.491	9.13	VALLEY GUTTER FLOWLINE
19	456867.437	1270760.214	9.01	VALLEY GUTTER FLOWLINE
20	456867.530	1270754.215	8.96	VALLEY GUTTER FLOWLINE
21	456824.707	1270753.552	8.70	VALLEY GUTTER FLOWLINE
22	456886.382	1270759.507	8.46	MATCH EXISTING/BOTTOM OF RAMP
23	456886.374	1270749.505	8.39	MATCH EXISTING
24	456868.453	1270759.229	8.63	BOTTOM FACE OF CURB
25	456868.607	1270749.231	8.48	MATCH EXISTING
26	456849.262	1270752.952	8.10	BOTTOM FACE OF CURB
27	456849.325	1270748.932	7.94	BACK OF WALK/MATCH EXISTING
28	456824.728	1270752.552	8.28	BOTTOM FACE OF CURB
29	456824.790	1270748.553	7.94	BACK OF WALK/MATCH EXISTING
30	456789.574	1270752.009	0.00	BOTTOM FACE OF CURB
31	456789.636	1270748.009	9.04	BACK OF WALK/MATCH EXISTING

Apr 06, 2026 - 11:06am hmcmaster X:\Stanwood_City of Projects\20250015 - Stanwood 2025 Prof Serv On-Call\0001 - Depot Park Design\CADD\02 - Plan Sheets\20250015_GR.dwg Layout Name: GR1

No.	Date	Revision	By	Appr.

PERTEET
 2707 COLBY AVENUE, SUITE 900
 EVERETT, WA 98201
 425.252.7700 | 800.615.9900

811
 Know what's below.
 Call before you dig.

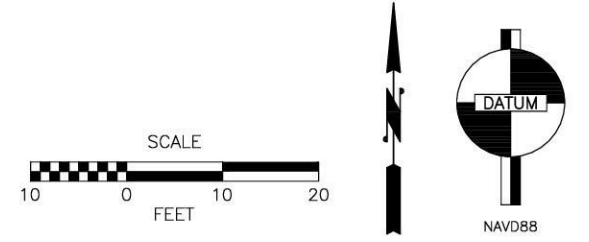
ERIN NICOLE ROULET
 STATE OF WASHINGTON
 REGISTERED PROFESSIONAL ENGINEER
 4-6-2026

Drawn By	Date
MC	4/2026
Designed By	
JR	4/2026
Checked By	
ER	4/2026
Approved By	
ER	4/2026

CITY OF STANWOOD
 DEPOT PARK
SITE GRADING PLAN

Drawing No. **GR1**
 Sheet No. 5 of 21

Project Number 20250015.0001



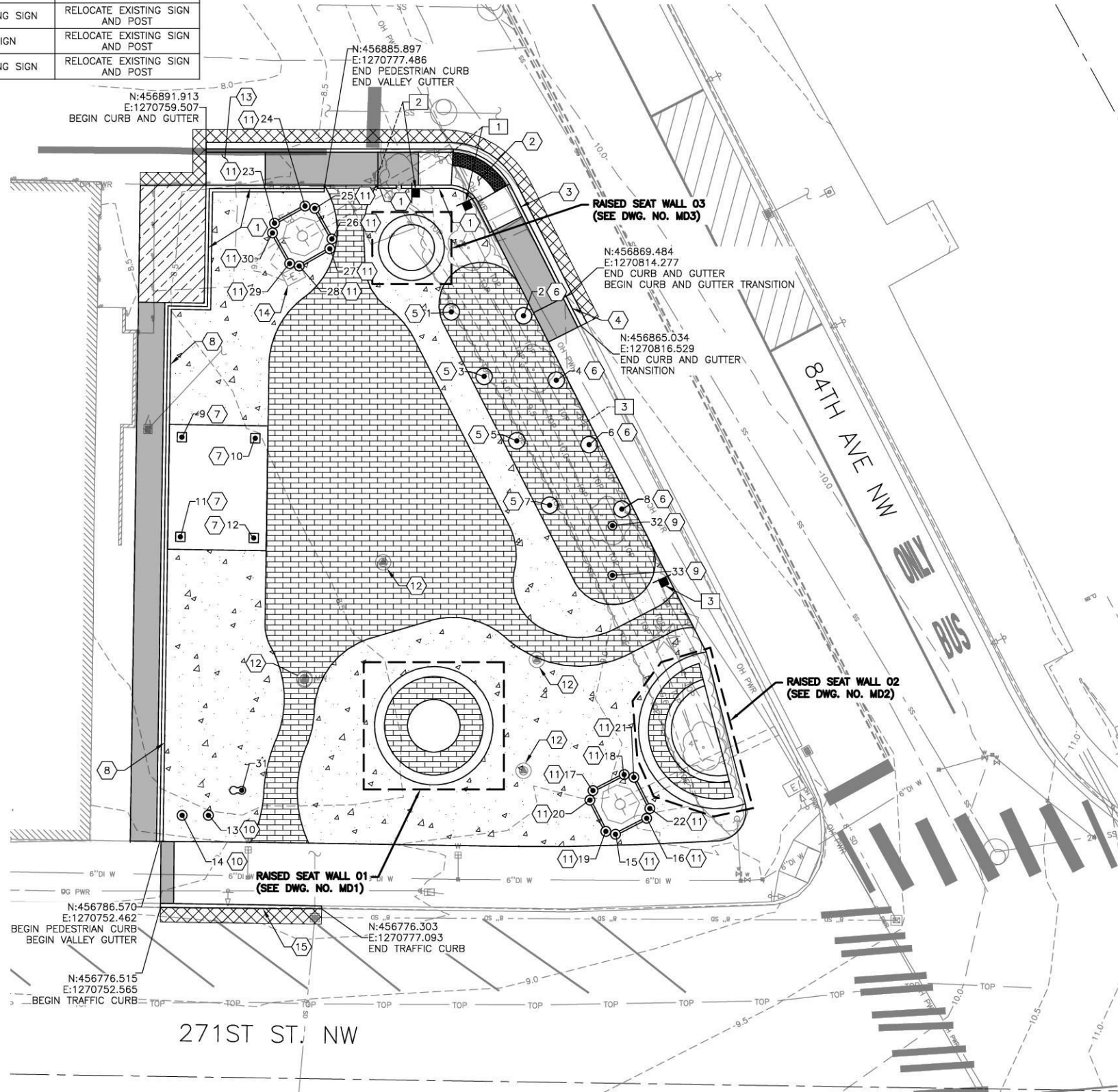
SEC. 19, T. 32 N, R.4 E, W.M.

SIGN SCHEDULE								
SIGN NO.	NORTHING	EASTING	SIGN TYPE	SIGN TYPE		POST TYPE	DESCRIPTION	REMARKS
				W(IN)	H(IN)			
1	456883.879	1270799.005	EXISTING			WOOD	RR CROSSING SIGN	RELOCATE EXISTING SIGN AND POST
2	456885.212	1270790.803	EXISTING			WOOD	STOP SIGN	RELOCATE EXISTING SIGN AND POST
3	456826.547	1270828.882	EXISTING			WOOD	RR CROSSING SIGN	RELOCATE EXISTING SIGN AND POST

SIGN LEGEND

- (NEW LOCATION)
- (EXISTING LOCATION)
- EXISTING SIGN ASSEMBLY TO BE RELOCATED
- RELOCATED SIGN LOCATION
- EXISTING SIGN

POINT TABLE				
POINT NO	NORTHING	EASTING	ELEV	ELEV LOCATION
1	456867.119	1270796.819	9.70	SUNSHADE POLE FOOTING
2	456866.538	1270807.804	9.91	SUNSHADE POLE FOOTING
3	456857.316	1270801.808	9.81	SUNSHADE POLE FOOTING
4	456856.735	1270812.793	9.97	SUNSHADE POLE FOOTING
5	456847.513	1270806.798	9.74	SUNSHADE POLE FOOTING
6	456846.932	1270817.782	9.89	SUNSHADE POLE FOOTING
7	456837.709	1270811.787	9.66	SUNSHADE POLE FOOTING
8	456837.128	1270822.771	9.82	SUNSHADE POLE FOOTING
9	456848.070	1270755.830	8.86	SHELTER STRUCTURE POST
10	456847.897	1270766.996	9.07	SHELTER STRUCTURE POST
11	456832.905	1270755.596	8.74	SHELTER STRUCTURE POST
12	456832.732	1270766.761	8.92	SHELTER STRUCTURE POST
13	456790.533	1270759.867	9.00	WAYFINDING SIGN FOOTING
14	456790.535	1270755.868	9.05	WAYFINDING SIGN FOOTING
15	456787.652	1270821.798	9.40	HISTORIC BOARD SIGN FOOTING
16	456790.083	1270826.544	9.52	HISTORIC BOARD SIGN FOOTING
17	456794.299	1270818.373	9.38	HISTORIC BOARD SIGN FOOTING
18	456796.730	1270823.120	9.44	HISTORIC BOARD SIGN FOOTING
19	456788.091	1270820.337	9.40	HISTORIC BOARD SIGN FOOTING
20	456792.841	1270817.913	9.36	HISTORIC BOARD SIGN FOOTING
21	456796.316	1270824.601	9.47	HISTORIC BOARD SIGN FOOTING
22	456791.565	1270827.025	9.54	HISTORIC BOARD SIGN FOOTING
23	456880.618	1270769.925	9.16	HISTORIC BOARD SIGN FOOTING
24	456883.234	1270774.573	9.21	HISTORIC BOARD SIGN FOOTING
25	456882.875	1270776.045	9.24	HISTORIC BOARD SIGN FOOTING
26	456878.223	1270778.654	9.33	HISTORIC BOARD SIGN FOOTING
27	456876.724	1270778.336	9.34	HISTORIC BOARD SIGN FOOTING
28	456874.109	1270773.687	9.26	HISTORIC BOARD SIGN FOOTING
29	456874.485	1270772.226	9.22	HISTORIC BOARD SIGN FOOTING
30	456879.136	1270769.617	9.15	HISTORIC BOARD SIGN FOOTING
31	456794.337	1270764.936	8.90	CENTER OF WATER FOUNTAIN BASE
32	456834.610	1270821.332	9.76	BENCH SWING FOOTING
33	456827.050	1270821.332	9.64	BENCH SWING FOOTING



CONSTRUCTION NOTES:

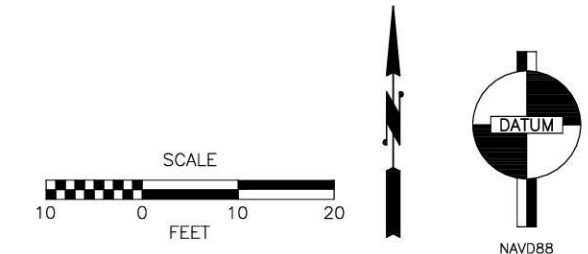
- 1) INSTALL CEMENT CONCRETE PEDESTRIAN CURB, PER WSDOT STD. PLAN F-10.12.
- 2) CONSTRUCT CEMENT CONC. CURB RAMP TYPE PARALLEL PER DETAILS ON DWG. NO. CR1.
- 3) CONSTRUCT CEMENT CONC. TRAFFIC CURB AND GUTTER 4 IN. HEIGHT, PER WSDOT STD. PLAN F-10.12.
- 4) CONSTRUCT CEMENT CONC. TRAFFIC CURB AND GUTTER TRANSITION FROM 4 IN. HEIGHT TO MATCH EXISTING.
- 5) CONSTRUCT FOOTING AND INSTALL 10 FT POLE FOR SUNSHADE CANOPY, PER SPECIAL PROVISION 8-28.
- 6) CONSTRUCT FOOTING AND INSTALL 8 FT POLE FOR SUNSHADE CANOPY, PER SPECIAL PROVISION 8-28.
- 7) CENTER OF BASEPLATE FOR SHELTER STRUCTURE POST. SEE DWG. NO. S1.1 - S3.1.
- 8) CONSTRUCT CEMENT CONC. VALLEY GUTTER, PER DETAIL ON DWG. NO. MD4.
- 9) CONSTRUCT FOOTING FOR BENCH SWING STRUCTURE, PER SPECIAL PROVISION 8-26.
- 10) CONSTRUCT FOOTING FOR WAYFINDING SIGN STRUCTURE, PER SPECIAL PROVISION 8-21.
- 11) CONSTRUCT FOOTING FOR HISTORIC BOARD SIGN STRUCTURE, PER SPECIAL PROVISION 8-21.
- 12) ADJUST MONITORING WELL TO FINISHED GRADE, PER SPECIAL PROVISION 3-10.
- 13) CONSTRUCTION HMA TRANSITION RAMP, PER DETAIL ON DWG. NO. MD4.
- 14) JUNCTION BOX TO BE RELOCATED BY OTHERS.
- 15) CONSTRUCT CEMENT CONC. TRAFFIC CURB, PER WSDOT STD. PLAN F-10.12.

GENERAL NOTES:

1. NOT ALL UTILITIES ARE SHOWN ON PLANS. THE CONTRACTOR IS RESPONSIBLE FOR LOCATING ALL EXISTING UTILITIES PRIOR TO WORK, NOTIFYING ENGINEER OF CONFLICTS, AND AVOIDING CONFLICTS.
2. SEE DWG. NO. GR3 FOR SITE GEOMETRY DETAILS.
3. RIGHT OF WAY SHOWN IS APPROXIMATE. CONTRACTOR IS RESPONSIBLE FOR LOCATING RIGHT OF WAY.
4. CONTRACTOR TO FIELD LOCATE FULL-DEPTH PAVEMENT REPAIR AREAS WITH THE ENGINEER PRIOR TO SAWCUTTING.
5. JOINTING PLAN FOR PIGMENTED CEMENT CONCRETE PAVEMENT MUST BE SUBMITTED FOR REVIEW AND APPROVAL BY ENGINEER PER SPECIAL PROVISION 8-14.3(3) PRIOR TO CONSTRUCTION. MAXIMUM JOINT SPACING OF 5 FEET.

LEGEND:

- CEMENT CONC. SIDEWALK PER WSDOT STD. PLAN F-30.10
- PIGMENTED CEMENT CONC. PAVEMENT, PER DETAIL ON DWG. NO. MD4
- CONCRETE UNIT PAVER PER DETAIL ON DWG. NO. MD4.
- 3" HMA CL. 1/2 IN. PG 58H-22 OVER 4" CRUSHED SURFACING TOP COURSE.
- 8" HMA CL. 1/2 IN. PG 58H-22 OVER 4" CRUSHED SURFACING TOP COURSE.



Apr 06, 2026 - 11:07am hmcmaester X:\Stanwood_City of Projects\20250015 - Stanwood 2025 Prof Surv On-Call\0001 - Depot Park Design\CADD\02 - Plan Sheets\20250015_Gr2.dwg Layout Name: GR2

PERTEET
 2707 COLBY AVENUE, SUITE 900
 EVERETT, WA 98201
 425.252.7700 | 800.615.9900

811
 Know what's below.
 Call before you dig.

ERIN NICOLE ROULETTE
 STATE OF WASHINGTON
 REGISTERED PROFESSIONAL ENGINEER
 21038271
 4-6-2026

Drawn By	Date
MC	4/2026
Designed By	
JR	4/2026
Checked By	
JR	4/2026
Approved By	
ER	4/2026

Project Number
 20250015.0001

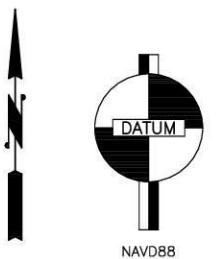
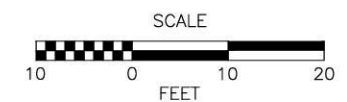
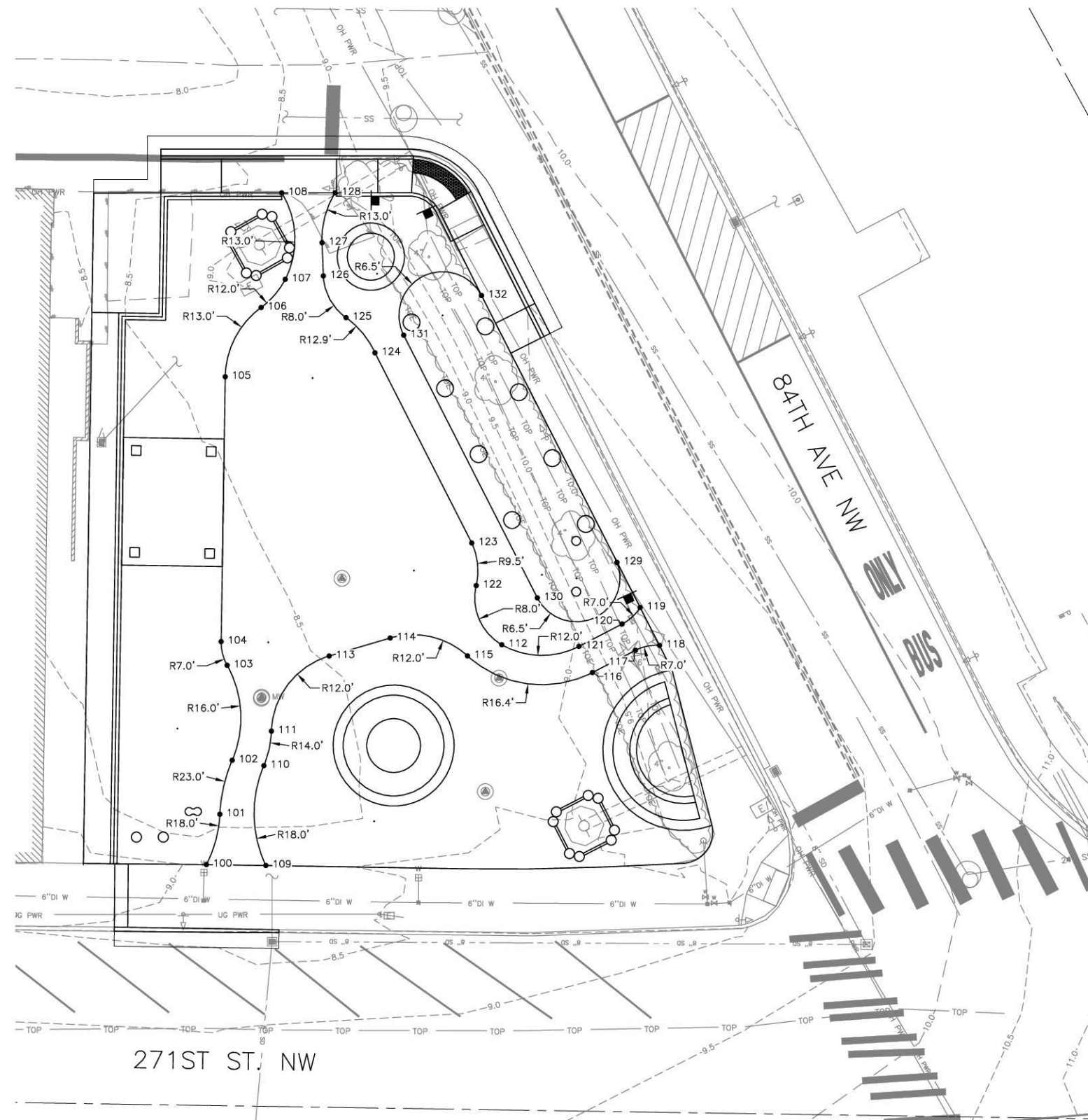
CITY OF STANWOOD DEPOT PARK		Drawing No. GR2
SITE IMPROVEMENT PLANS		Sheet No. 6 / 21 of Total

SEC. 19, T. 32 N, R.4 E, W.M.

GENERAL NOTES:

1. SEE DWG. NO. GR2 FOR MATERIAL TYPES, DEPTHS AND CONSTRUCTION NOTES.
2. SEE DWG. NO. GR1 FOR SITE GRADING INFORMATION.

SITE GEOMETRY TABLE			
POINT NO	NORTHING	EASTING	DESCRIPTION
100	456786.443	1270766.279	PC CEMENT CONC. PAVEMENT
101	456793.930	1270768.285	PCC CEMENT CONC. PAVEMENT
102	456801.963	1270770.123	PCC CEMENT CONC. PAVEMENT
103	456816.098	1270769.370	PCC CEMENT CONC. PAVEMENT
104	456819.632	1270768.475	PT CEMENT CONC. PAVEMENT
105	456859.039	1270769.085	PC CEMENT CONC. PAVEMENT
106	456869.342	1270774.425	PCC CEMENT CONC. PAVEMENT
107	456873.532	1270778.017	PCC CEMENT CONC. PAVEMENT
108	456886.397	1270777.485	PT CEMENT CONC. PAVEMENT
109	456786.317	1270775.130	PC CEMENT CONC. PAVEMENT
110	456801.168	1270774.834	PCC CEMENT CONC. PAVEMENT
111	456806.306	1270775.963	PCC CEMENT CONC. PAVEMENT
112	456819.167	1270810.254	PC CEMENT CONC. PAVEMENT
113	456817.486	1270784.561	PT CEMENT CONC. PAVEMENT
114	456820.167	1270793.644	PC CEMENT CONC. PAVEMENT
115	456817.502	1270805.152	PCC CEMENT CONC. PAVEMENT
116	456815.026	1270823.753	PT CEMENT CONC. PAVEMENT
117	456818.342	1270830.162	PC CEMENT CONC. PAVEMENT
118	456819.069	1270833.731	PT CEMENT CONC. PAVEMENT
119	456824.706	1270830.862	PT CEMENT CONC. PAVEMENT
120	456822.248	1270828.174	PC CEMENT CONC. PAVEMENT
121	456818.918	1270821.739	PT CEMENT CONC. PAVEMENT
122	456827.969	1270806.454	PCC CEMENT CONC. PAVEMENT
123	456834.296	1270805.784	PC CEMENT CONC. PAVEMENT
124	456862.599	1270791.380	PT CEMENT CONC. PAVEMENT
125	456867.836	1270787.070	PCC CEMENT CONC. PAVEMENT
126	456874.037	1270783.696	PC CEMENT CONC. PAVEMENT
127	456878.985	1270783.491	PT CEMENT CONC. PAVEMENT
128	456886.403	1270785.451	PC CEMENT CONC. PAVEMENT
129	456831.413	1270827.408	PC CEMENT CONC. PAVEMENT
130	456826.133	1270815.549	PT CEMENT CONC. PAVEMENT
131	456865.226	1270795.654	PC CEMENT CONC. PAVEMENT
132	456871.122	1270807.239	PT CEMENT CONC. PAVEMENT



Apr 06, 2026 - 11:08am hmcmaster X:\Stanwood_City of Projects\20250015 - Stanwood 2025 Prof Serv On-Call\0001 - Depot Park Design\CADD\02 - Plan Sheets\20250015_Gr3.dwg Layout Name: GR3

No.	Date	Revision	By	Appr.

PERTEET
 2707 COLBY AVENUE, SUITE 900
 EVERETT, WA 98201
 425.252.7700 | 800.615.9900

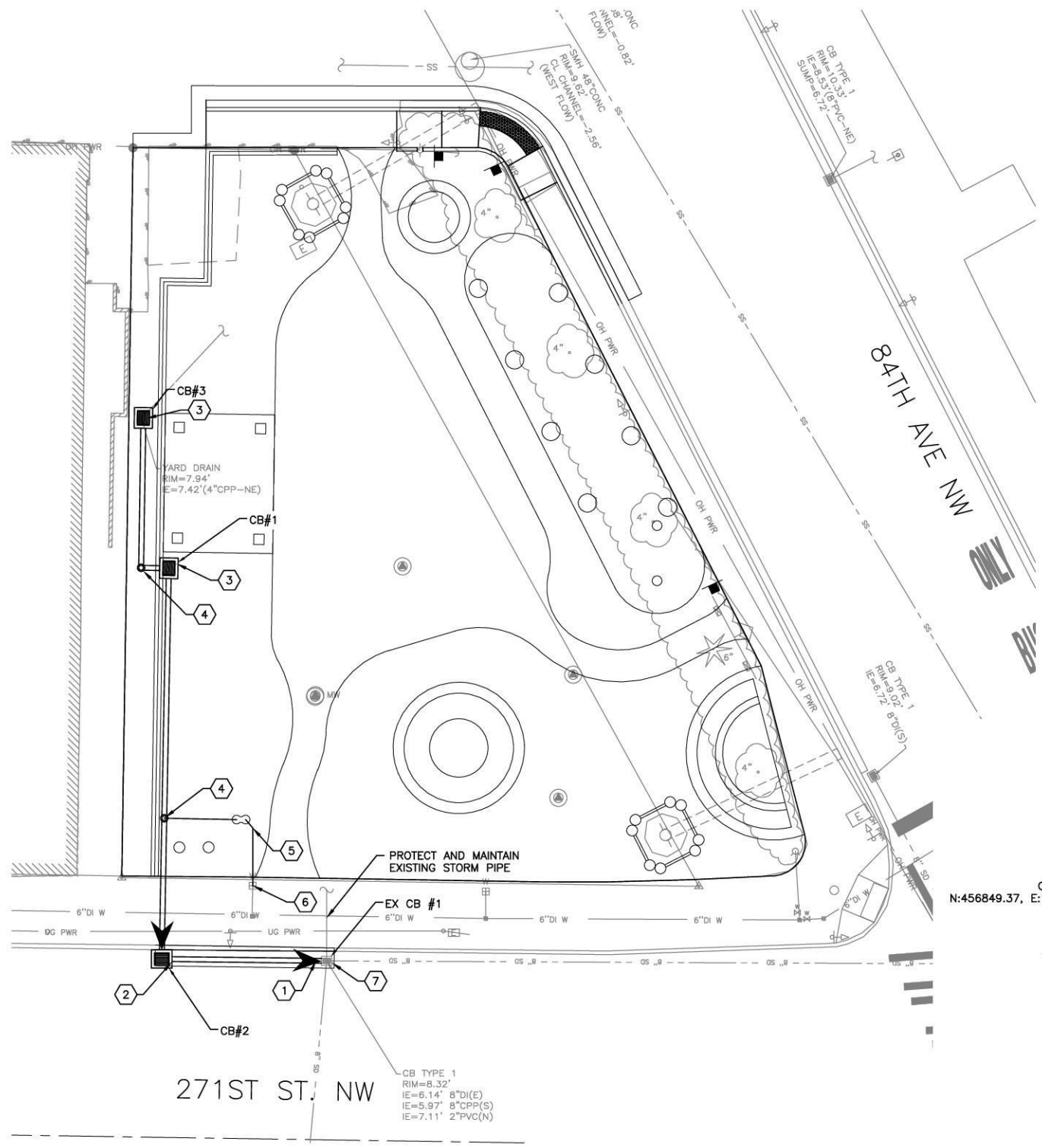
811
 Know what's below.
 Call before you dig.

Drawn By	MC	Date	4/2026
Designed By	JR		
Checked By	JR		4/2026
Approved By	ER		4/2026
Project Number	20250015.0001		

CITY OF STANWOOD
 DEPOT PARK
SITE IMPROVEMENT PLANS

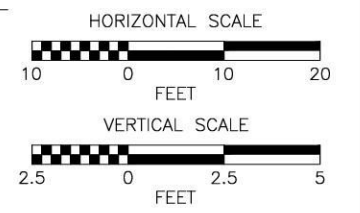
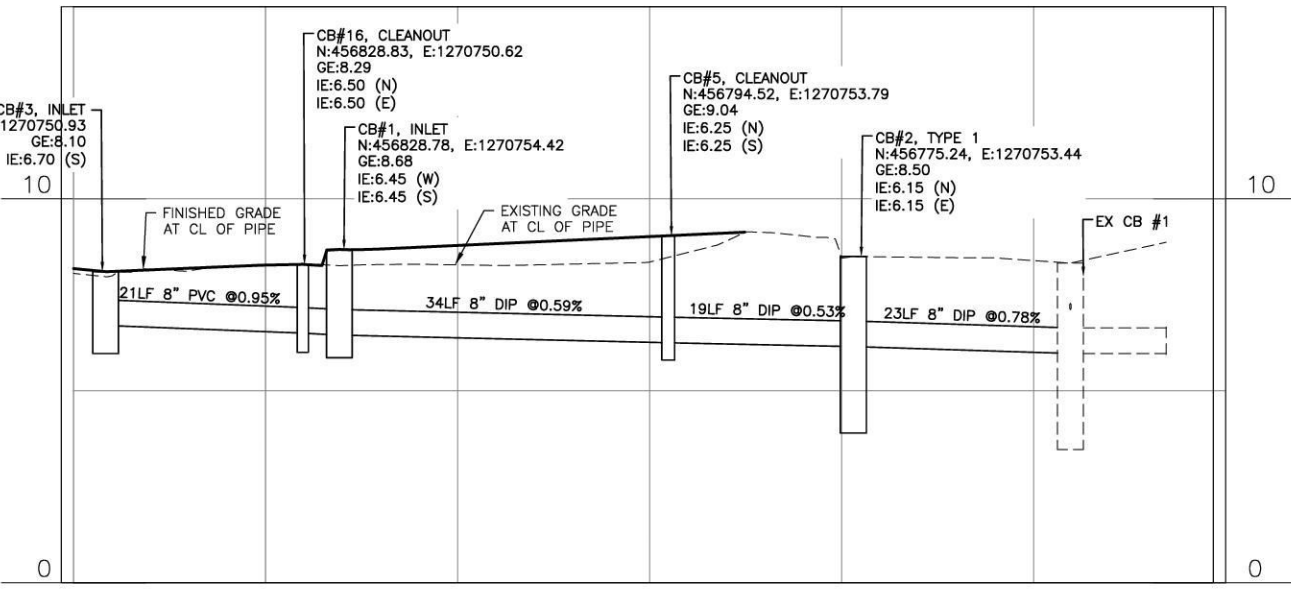
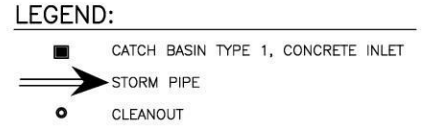
Drawing No.	GR3
Sheet No.	7
	21 of Total

SEC. 19, T. 32 N, R.4 E, W.M.



- CONSTRUCTION NOTES:**
- CONNECT TO DRAINAGE STRUCTURE.
 - INSTALL CATCH BASIN TYPE 1 PER WSDOT STD. PLAN B-5.20 WITH VANED GRATE PER WSDOT STD. PLAN B-30.30.
 - INSTALL CONCRETE INLET PER WSDOT STD. PLAN B-25.60 WITH VANED GRATE PER WSDOT STD. PLAN B-30.30.
 - INSTALL 8" PVC STORM DRAIN CLEANOUT PER DETAIL ON DWG. NO. MD4.
 - INSTALL 3/4-INCH WATER SERVICE LINE FOR WATER FOUNTAIN.
 - CONNECT TO EXISTING WATER METER.
 - ADJUST CATCH BASIN TO FINISH GRADE.

- GENERAL NOTES:**
- ALL WORKMANSHIP AND MATERIALS SHALL BE IN ACCORDANCE WITH CITY OF STANWOOD STANDARDS AND THE MOST CURRENT COPY OF THE "STATE OF WASHINGTON STANDARD SPECIFICATIONS FOR ROAD, BRIDGE AND MUNICIPAL CONSTRUCTION" (WSDOT/APWA).
 - ALL TRENCHES LOCATED IN THE R.O.W. SHALL BE BACKFILLED WITH BANK RUN GRAVEL FOR TRENCH BACKFILL PER STANWOOD STREET AND UTILITY STANDARDS 2B.190.
 - ALL STORM DRAIN PIPE AND SERVICES SHALL BE INSTALLED WITH DETECTABLE MARKING TAPE INSTALLED 18" ABOVE THE PIPE CROWN, OR 12" BELOW FINISHED GRADE (WHICHEVER IS DEEPER). DETECTABLE MARKING TAPE SHALL CONFORM TO WSDOT/APWA STANDARD SPECIFICATIONS, WITH MESSAGE CONVEYING "STORM DRAIN" AND BE COLORED CODED GREEN. IN ADDITION, ALL CURVILINEAR PIPES SHALL BE INSTALLED WITH 14 GAUGE COATED COPPER WIRE WRAPPED AROUND THE PIPE, BROUGHT UP BARED AND WRAPPED THREE TIMES AROUND THE MANHOLE RING OR CATCH BASIN FRAME. TAPE AND INSTALLATION SHALL BE PER WSDOT/APWA STANDARDS. THE CONTRACTOR SHALL FURNISH AND INSTALL THE TAPE AND WIRE.
 - CALL UNDERGROUND UTILITIES AT 1-800-424-5555 A MINIMUM OF 48 HOURS PRIOR TO ANY EXCAVATIONS.
 - ALL CATCH BASINS AND INLETS SHALL HAVE A VANED GRATE PER WSDOT STD PLAN B-30.30, UNLESS NOTED OTHERWISE IN THE PLANS.
 - THE CONTRACTOR SHALL POTHOLE ALL UTILITY CROSSINGS PRIOR TO STARTING CONSTRUCTION OF THE STORMWATER PIPE.



Apr 06, 2026 - 11:08am hmcmaester X:\Stanwood_City of Projects\20250015 - Stanwood 2025 Prof Serv On-Call\0001 - Depot Park Design\CADD\02 - Plan Sheets\20250015_UT.dwg Layout Name: UT1

No.	Date	Revision	By	Appr.

PERTEET
 2707 COLBY AVENUE, SUITE 900
 EVERETT, WA 98201
 425.252.7700 | 800.615.9900

811
 Know what's below.
 Call before you dig.



Drawn By	Date
MC	4/2026
Designed By	
JR	4/2026
Checked By	
JR	4/2026
Approved By	
ER	4/2026

Project Number
20250015.0001

CITY OF STANWOOD
 DEPOT PARK
UTILITY PLAN AND PROFILE

Drawing No.	UT1
Sheet No.	8 of 21

SEC. 19, T. 32 N, R.4 E, W.M.

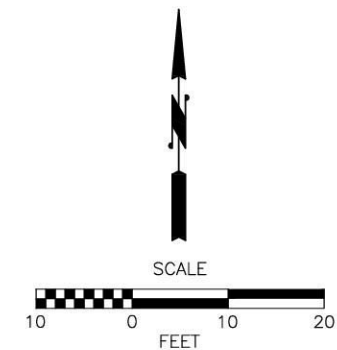
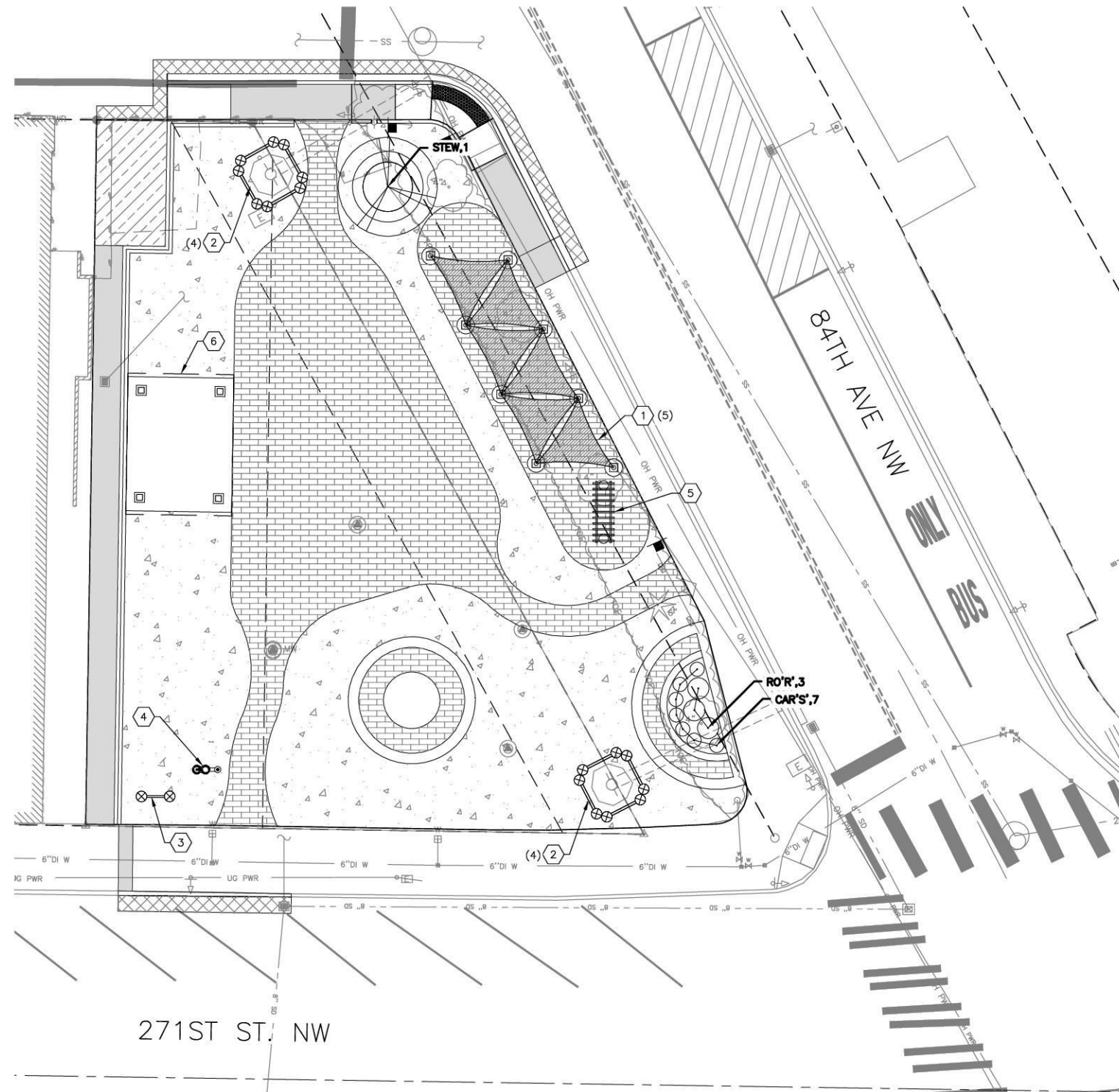
EAST PARK PLANT SCHEDULE					
QTY	SYMBOL	BOTANICAL NAME	COMMON NAME	SIZE	SPACING
7	CAR'S	CAREX STRICTA 'BOWLES GOLDEN'	GOLDEN SEDGE	1 G.	2' O.C.
3	RO'R	ROSA X 'NOARE RED'	RED CARPET ROSE	2 G.	3-4' O.C.
1	STEW	STEWARTIA PSEUDOCAMELLIA	FALSE CAMELLIA TREE	2" CAL.	AS NOTED

CONSTRUCTION NOTES:

- 1) INSTALL SUNSHADE CANOPY SYSTEM PER SPECIAL PROVISION 8-28.
- 2) INSTALL HISTORIC BOARD SIGN PER SPECIAL PROVISION 8-21.
- 3) INSTALL WAYFINDING SIGN PER SPECIAL PROVISION 8-21.
- 4) INSTALL WATER FOUNTAIN PER DETAIL ON DWG. NO. SFD1 AND PER SPECIAL PROVISION 8-27.
- 5) INSTALL BENCH SWING STRUCTURE PER SPECIAL PROVISION 8-26.
- 6) CONSTRUCT SHELTER STRUCTURE PER DETAILS ON DWG. S1.1 - S3.1.

PLANTING NOTES:

1. PLANT PLACEMENT SHALL BE INSPECTED BY LANDSCAPE ARCHITECT PRIOR TO PLANTING.
2. PIT PLANT ALL SHRUBS WITH A MINIMUM 6" TOPSOIL MIX AROUND ROOT BALL. PLANT ALL TREES WITH A MINIMUM 12" TOPSOIL MIX AROUND ROOT BALL. MIX TOPSOIL 50% WITH EXISTING SOIL.
3. TOPSOIL TYPE A SHALL CONFORM TO SPECIAL PROVISION 8-02 OR BETTER FOR ALL IMPORTED TOPSOIL.
4. SET ALL NEW PLANTINGS 3" ABOVE PLANTED ROUGH GRADE TO ALLOW FOR THE ADDITION OF MULCH. SET TOP OF ROOT BALL AT FINISH GRADE.
5. LIGHTLY SEPARATE BOUND ROOTS FOR PLANTS REMOVED FROM CONTAINERS AND POTS PRIOR TO PLANTING.
6. AFTER PLANTING 1 GAL. AND LARGER PLANTS, COVER ALL PLANT BEDS WITH 4" FINE DARK BARK MULCH.
7. SPREAD PREEN OR MIRACAL-GROW WEED AND FEED HERBICIDE WITH TRIFLURLOLINE OR ORGANIC CORN GLUTEN PER MANUFACTURERS SPECS UNDER MULCH, AND WATER PRIOR TO APPLYING MULCH. APPLY AGAIN AFTER MULCH APPLICATION AND WATER TO ACTIVATE.
8. ALL PLANT MATERIAL SHALL BE AVAILABLE ON SITE FOR INSPECTION BY THE ENGINEER PRIOR TO PLANTING.
9. NO SUBSTITUTION FOR PLANT MATERIAL SHALL BE ALLOWED WITHOUT REVIEW AND APPROVAL BY THE ENGINEER.
10. ALL PLANT MATERIAL SHALL BE FREE OF PEST AND DISEASES AND WITHOUT DAMAGE TO ROOT OR FOLIAGE. EXISTING PLANTS SHALL BE SAVED WHERE PRACTICAL AND REUSED IN THE LANDSCAPE. REVIEW EXISTING PLANTS WITH LANDSCAPE ARCHITECT OR ENGINEER FOR SELECTION AND PLACEMENT. SET PLANTS TO BE REUSED IN HOLDING AREA WITH ADEQUATE WATER AND MATERIAL TO COVER ROOT BALLS.

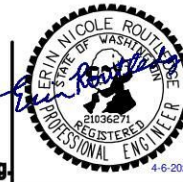


Apr 06, 2026 - 11:10am hmcmaster X:\Stanwood_City of Projects\20250015 - Stanwood 2025 Prof Serv On-Call\0001 - Depot Park Design\CADD\02 - Plan Sheets\20250015_SF.dwg Layout Name: SF1

No.	Date	Revision	By	Appr.

PERTEET
 2707 COLBY AVENUE, SUITE 900
 EVERETT, WA 98201
 425.252.7700 | 800.615.9900

811
 Know what's below.
 Call before you dig.

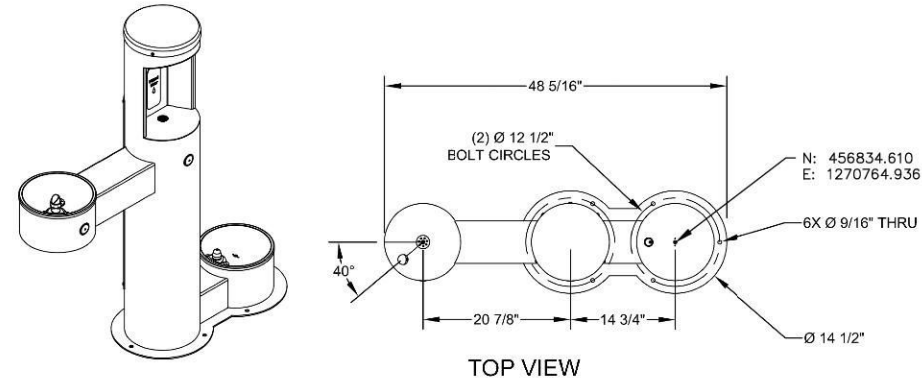


Drawn By	Date
MC	4/2026
Designed By	
JR	
Checked By	4/2026
JR	
Approved By	4/2026
ER	

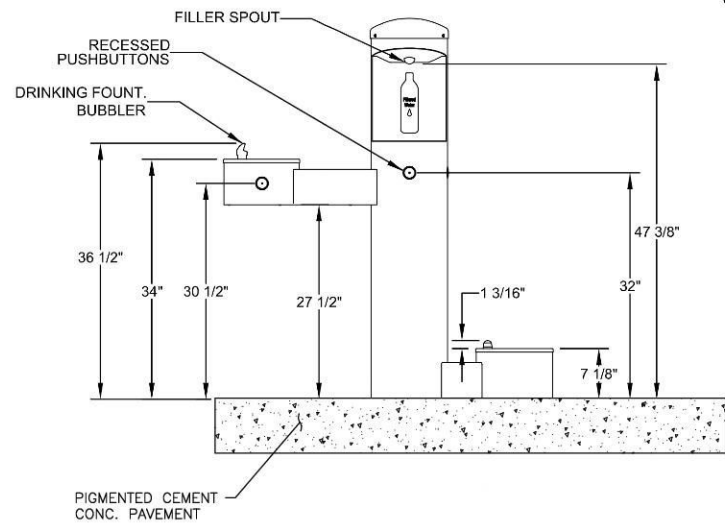
Project Number
20250015.0001

CITY OF STANWOOD
 DEPOT PARK
 SITE FURNISHING AND
 PLANTING PLAN

Drawing No.	SF1
Sheet No.	9
of Total	21

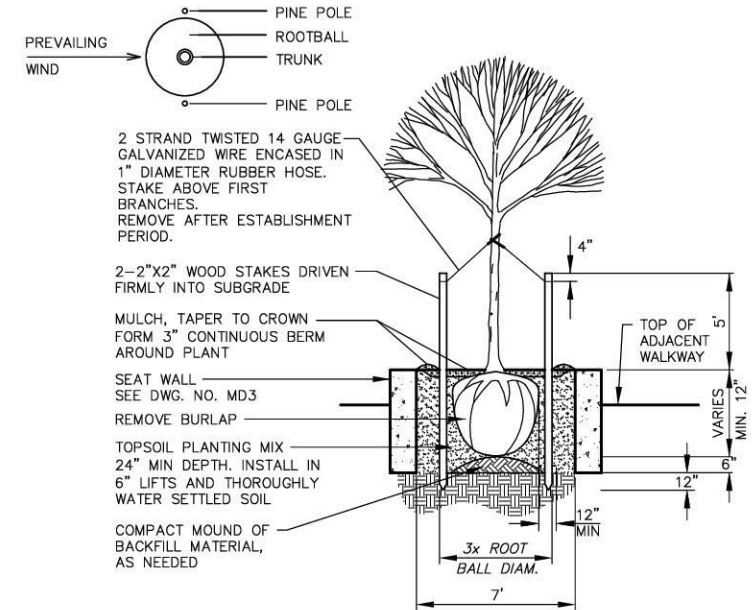
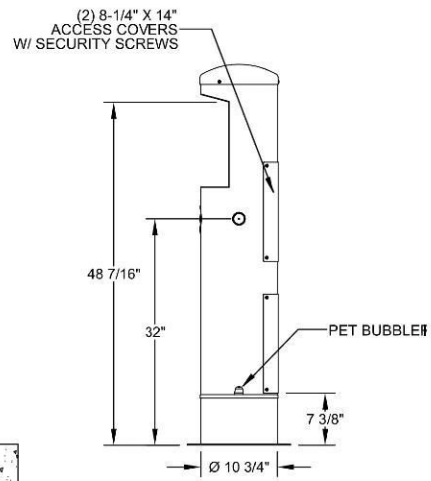


TOP VIEW



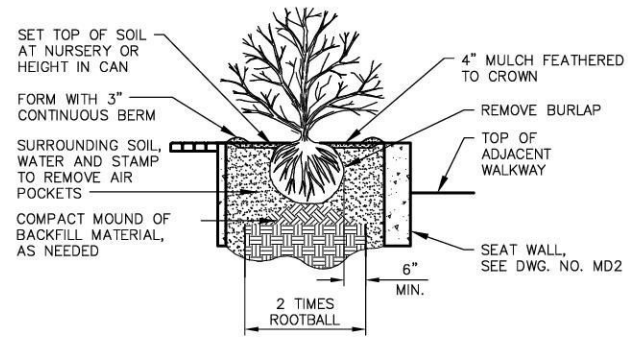
WATER FOUNTAIN DETAIL

N.T.S.



TREE PLANTING DETAIL

N.T.S.



PLANTING BED DETAIL

N.T.S.

Apr 06, 2026 - 11:10am hmcmaester X:\Stanwood_City of Projects\20250015 - Stanwood 2025 Prof Serv On-Call\0001 - Depot Park Design\CADD\02 - Plan Sheets\20250015_SFD.dwg Layout Name: SFD1

No.	Date	Revision	By	Appr.

PERTEET
 2707 COLBY AVENUE, SUITE 900
 EVERETT, WA 98201
 425.252.7700 | 800.615.9900

811
 Know what's below.
 Call before you dig.

ERIN NICOLE ROULETTE
 STATE OF WASHINGTON
 REGISTERED PROFESSIONAL ENGINEER
 21038271
 4-6-2026

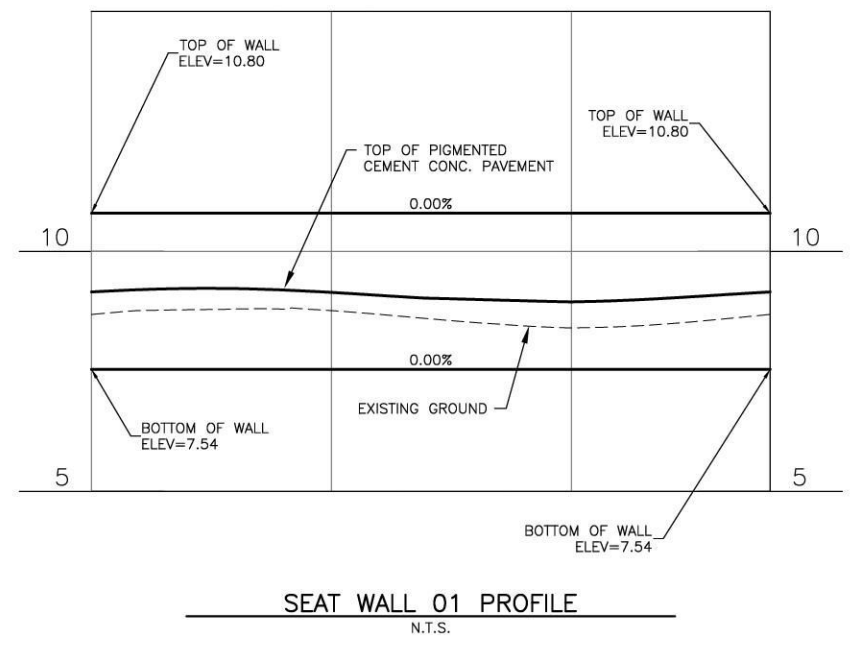
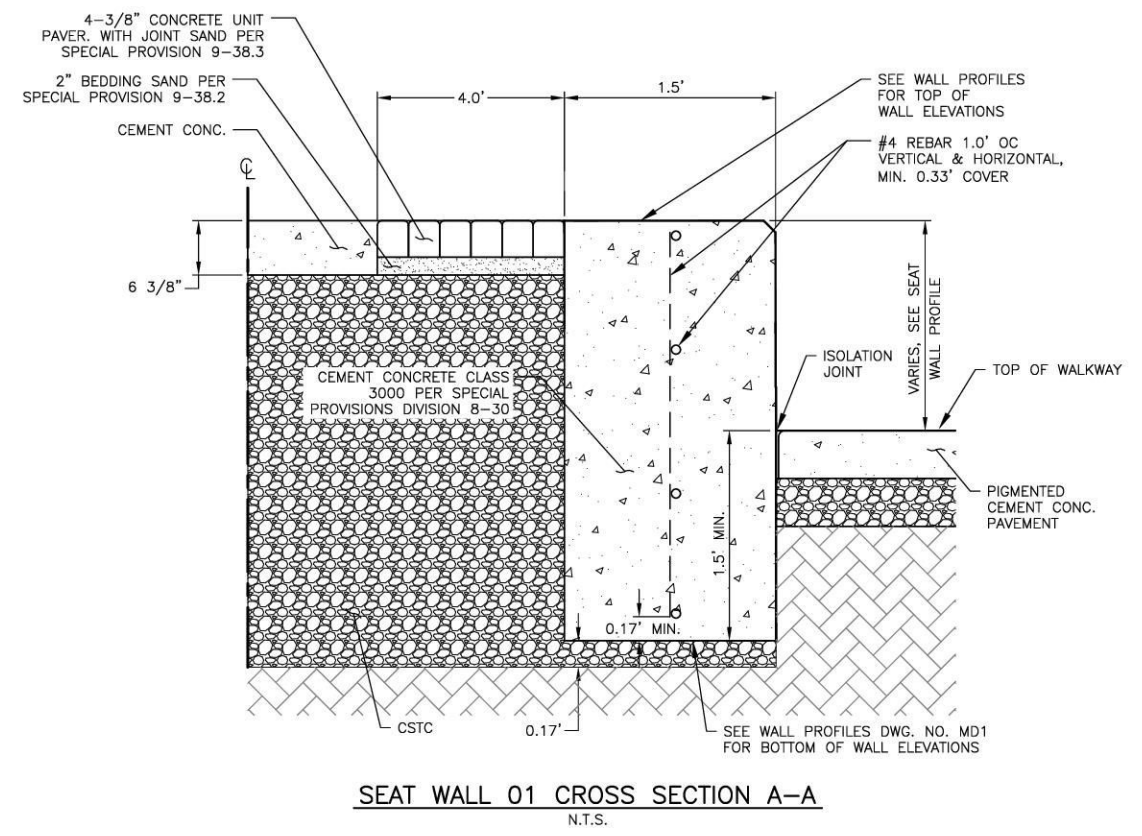
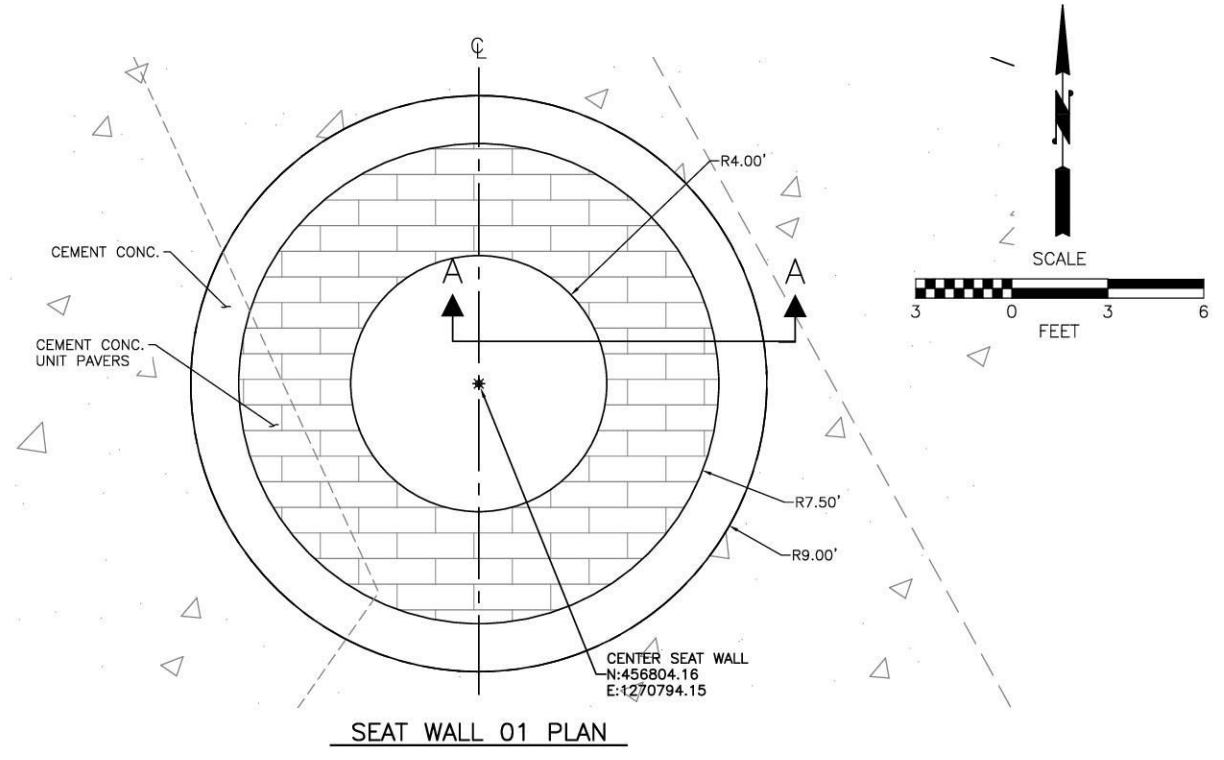
Drawn By	Date
MC	4/2026
Designed By	
JR	4/2026
Checked By	
ER	4/2026
Approved By	
ER	4/2026

Project Number	20250015.0001
----------------	---------------

CITY OF STANWOOD
 DEPOT PARK
SITE FURNISHING DETAILS

Drawing No.	SFD1
Sheet No.	10 of 21

Apr 06, 2026 - 11:12am hmcmaster X:\Stanwood_City of Projects\20250015 - Stanwood 2025 Prof Serv On-Call\0001 - Depot Park Design\CADD\02 - Plan Sheets\20250015_MD.dwg Layout Name: MD1



No.	Date	Revision	By	Appr.

PERTEET
 2707 COLBY AVENUE, SUITE 900
 EVERETT, WA 98201
 425.252.7700 | 800.615.9900

811
 Know what's below.
 Call before you dig.

ERIN NICOLE ROUPE
 STATE OF WASHINGTON
 REGISTERED PROFESSIONAL ENGINEER
 21038271
 4-6-2026

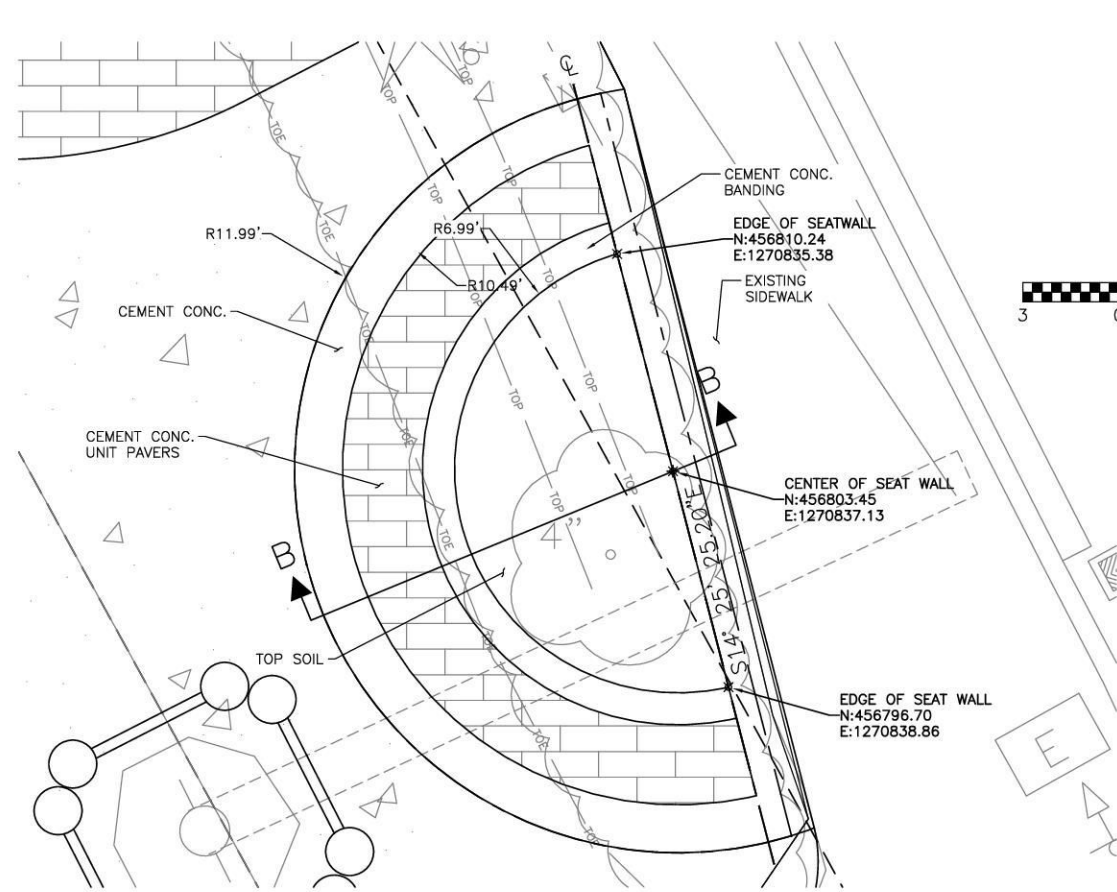
Drawn By	Date
MC	4/2026
Designed By	
JR	4/2026
Checked By	
ER	4/2026
Approved By	
ER	4/2026

Project Number
20250015.0001

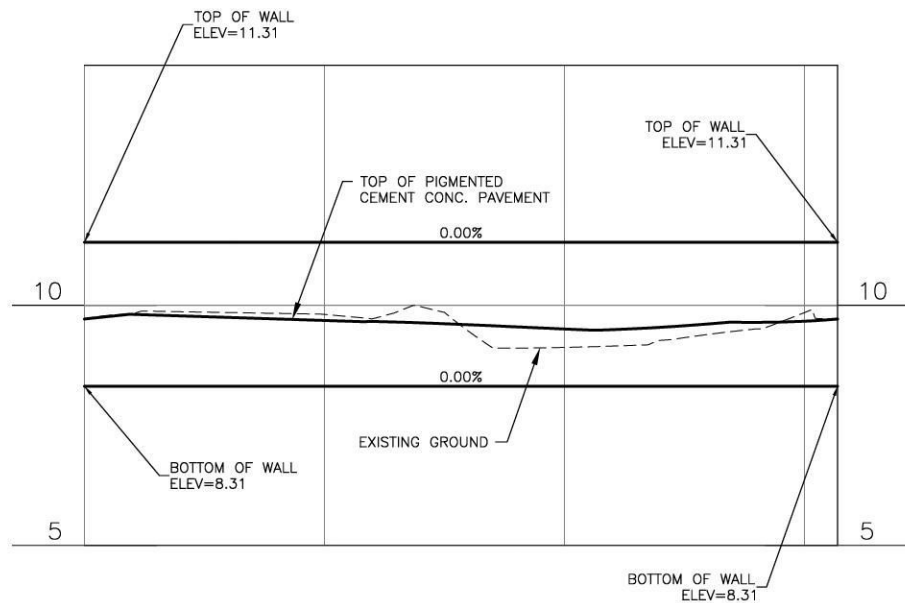
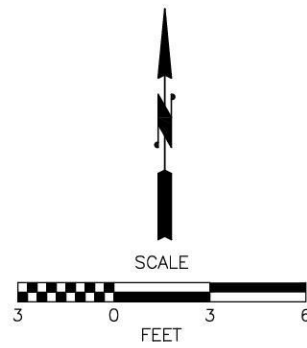
CITY OF STANWOOD
 DEPOT PARK
 MISCELLANEOUS DETAILS

Drawing No.	MD1
Sheet No.	11 of 21

Apr 06, 2026 - 11:12am hmcmaster X:\Stanwood_City of Projects\20250015 - Stanwood 2025 Prof Serv On-Call\0001 - Depot Park Design\CADD\02 - Plan Sheets\20250015_MD.dwg Layout Name: MD2

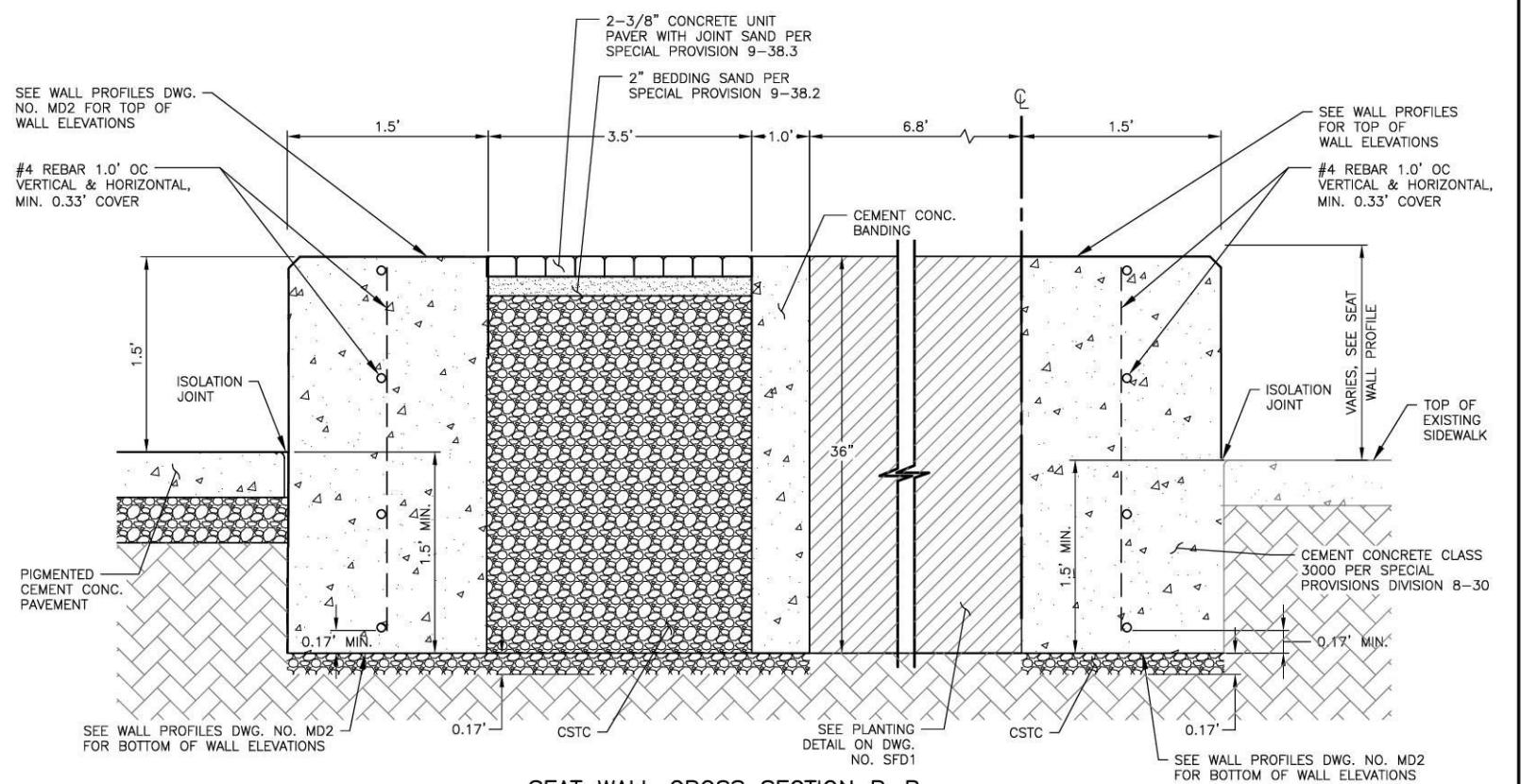


SEAT WALL 02 PLAN



SEAT WALL 02 PROFILE

N.T.S.



SEAT WALL CROSS SECTION B-B

N.T.S.

PERTEET
 2707 COLBY AVENUE, SUITE 900
 EVERETT, WA 98201
 425.252.7700 | 800.615.9900

811
 Know what's below.
 Call before you dig.

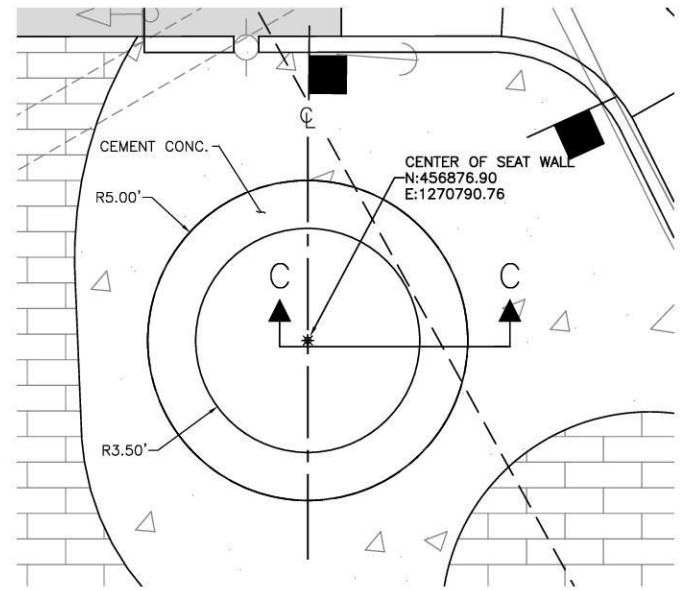
ERIN NICOLE ROUINE
 STATE OF WASHINGTON
 REGISTERED PROFESSIONAL ENGINEER
 21038271
 4-6-2026

Drawn By	Date
MC	4/2026
Designed By	
JR	4/2026
Checked By	
ER	4/2026
Approved By	
ER	4/2026

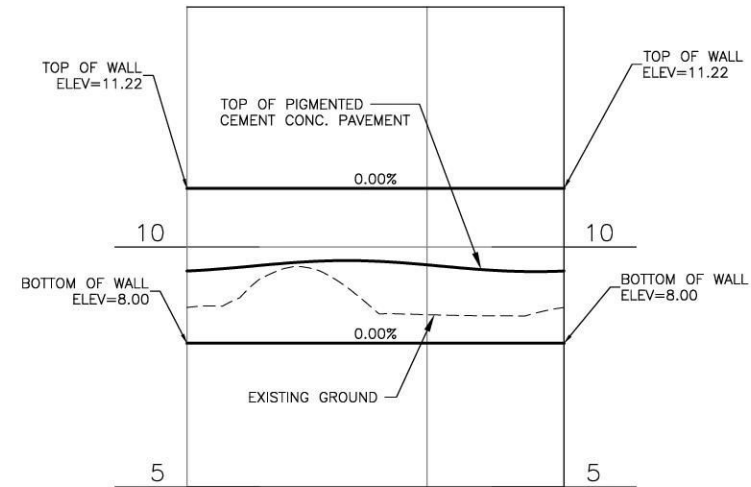
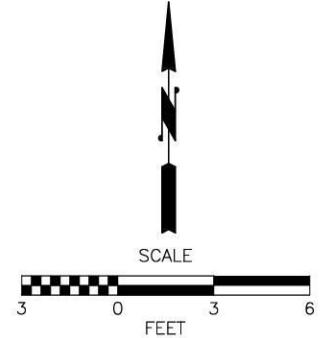
Project Number
20250015.0001

CITY OF STANWOOD
 DEPOT PARK
MISCELLANEOUS DETAILS

Drawing No.	MD2
Sheet No.	12
Total	21

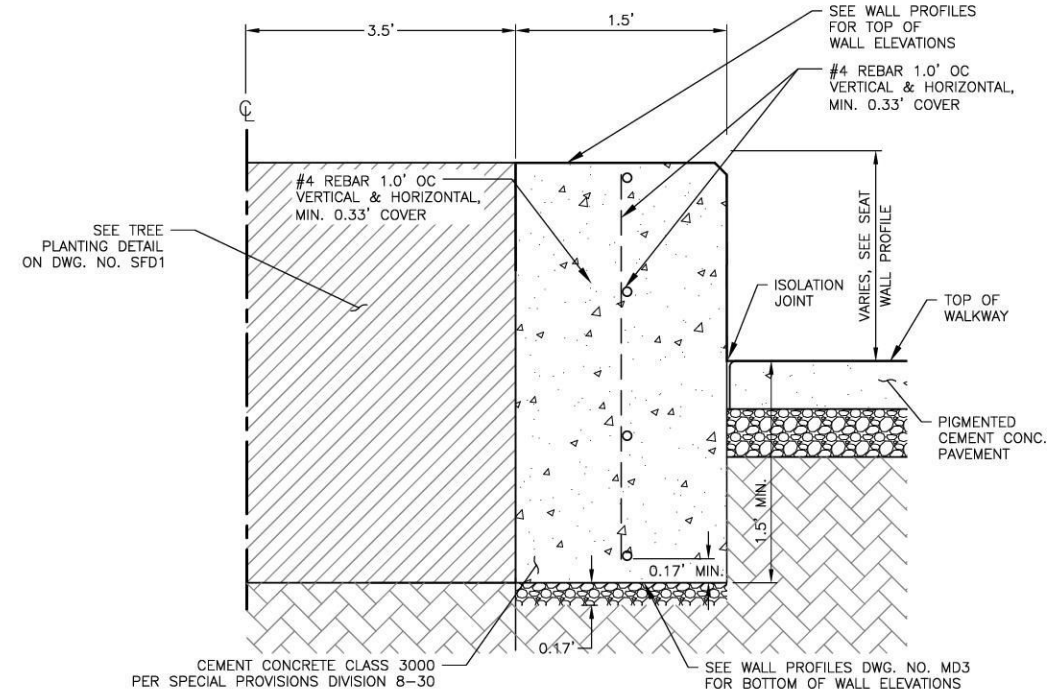


SEAT WALL 03 PLAN



SEAT WALL 03 PROFILE

N.T.S.



SEAT WALL 03 CROSS SECTION C-C

N.T.S.

Apr 06, 2026 - 11:12am hmcmaster X:\Stanwood_City of Projects\20250015 - Stanwood 2025 Prof Serv On-Call\0001 - Depot Park Design\CADD\02 - Plan Sheets\20250015_MD.dwg Layout Name: MD3

No.	Date	Revision	By	Appr.

PERTEET
 2707 COLBY AVENUE, SUITE 900
 EVERETT, WA 98201
 425.252.7700 | 800.615.9900

811
 Know what's below.
 Call before you dig.

ERIN NICOLE ROUPE
 STATE OF WASHINGTON
 REGISTERED PROFESSIONAL ENGINEER
 4-6-2026

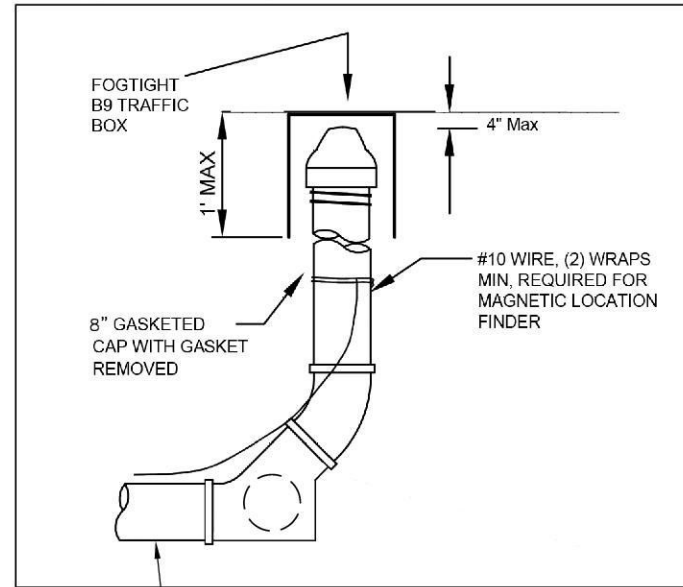
Drawn By	Date
MC	4/2026
Designed By	
JR	4/2026
Checked By	
ER	4/2026
Approved By	
ER	4/2026

Project Number	20250015.0001
----------------	---------------

CITY OF STANWOOD
 DEPOT PARK
 MISCELLANEOUS DETAILS

Drawing No.	MD3
Sheet No.	13
	21 of Total

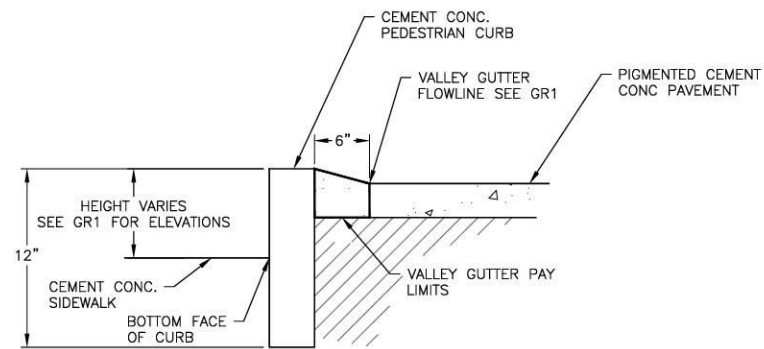
Apr 06, 2026 - 11:12am hmcmaster X:\Stanwood_City of Projects\20250015 - Stanwood 2025 Prof Serv On-Call\0001 - Depot Park Design\CADD\02 - Plan Sheets\20250015_MD.dwg Layout Name: MD4



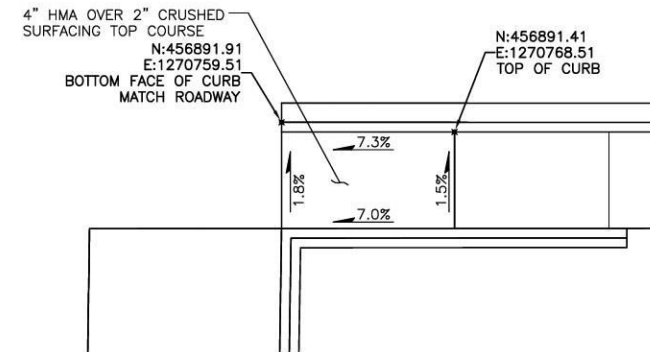
STORM DRAIN CLEANOUT DETAIL
N.T.S.

NOTES:

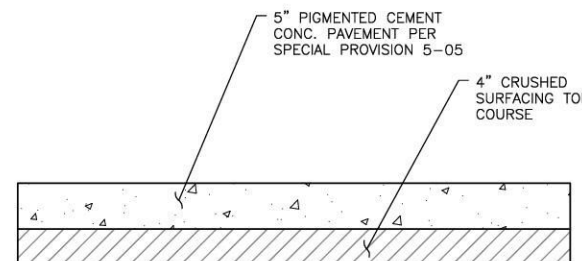
1. CLEANOUT PIPE AND FITTINGS SHALL BE PVC WITH GASKET FITTINGS. NO GLUE JOINTS ALLOWED.
2. A TEE OR SWEEP MAY BE INSTALLED IN LIEU OF WYE AS SHOWN. STRAIGHT TEES ARE NOT ACCEPTABLE.



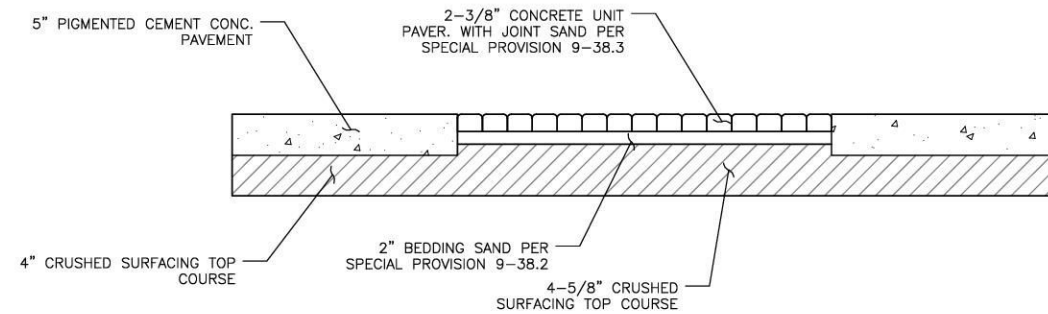
VALLEY GUTTER DETAIL
N.T.S.



HMA TRANSITION DETAIL
N.T.S.



PIGMENTED CEMENT CONC. PAVEMENT DETAIL
N.T.S.



CONCRETE UNIT PAVER DETAIL
N.T.S.

No.	Date	Revision	By	Appr.

PERTEET
2707 COLBY AVENUE, SUITE 900
EVERETT, WA 98201
425.252.7700 | 800.615.9900

811
Know what's below.
Call before you dig.

ERIN NICOLE ROULETTE
REGISTERED PROFESSIONAL ENGINEER
4-6-2026

Drawn By	Date
MC	4/2026
Designed By	
JR	4/2026
Checked By	
ER	4/2026
Approved By	
ER	4/2026

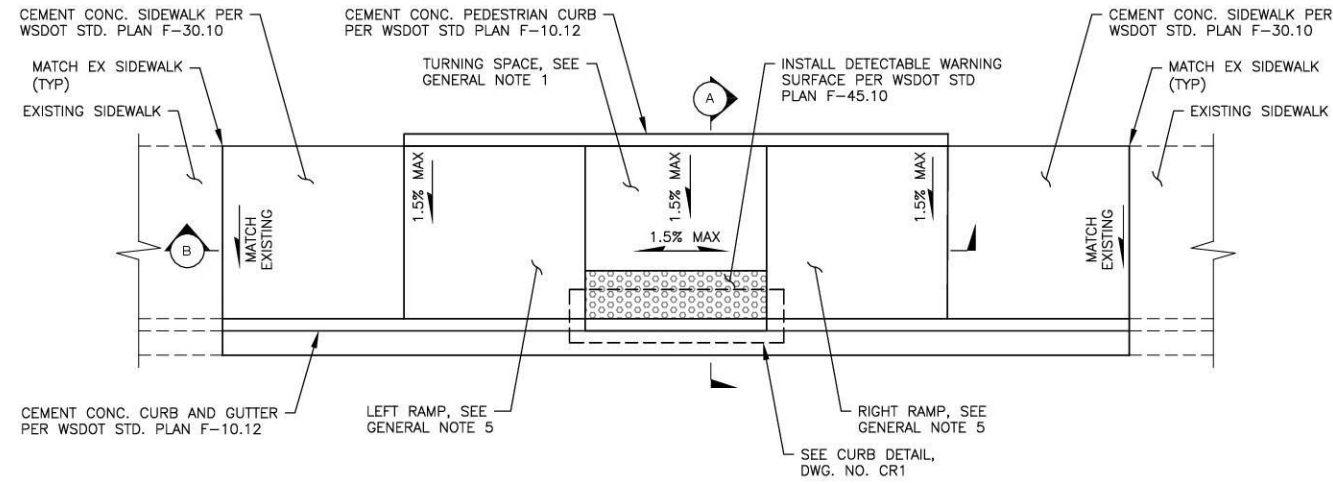
Project Number
20250015.0001

CITY OF STANWOOD
DEPOT PARK
MISCELLANEOUS DETAILS

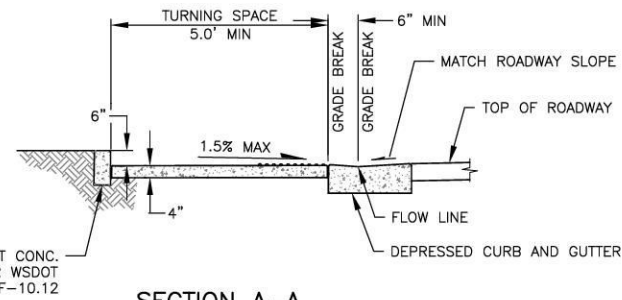
Drawing No.	MD4
Sheet No.	14 of 21

GENERAL NOTES:

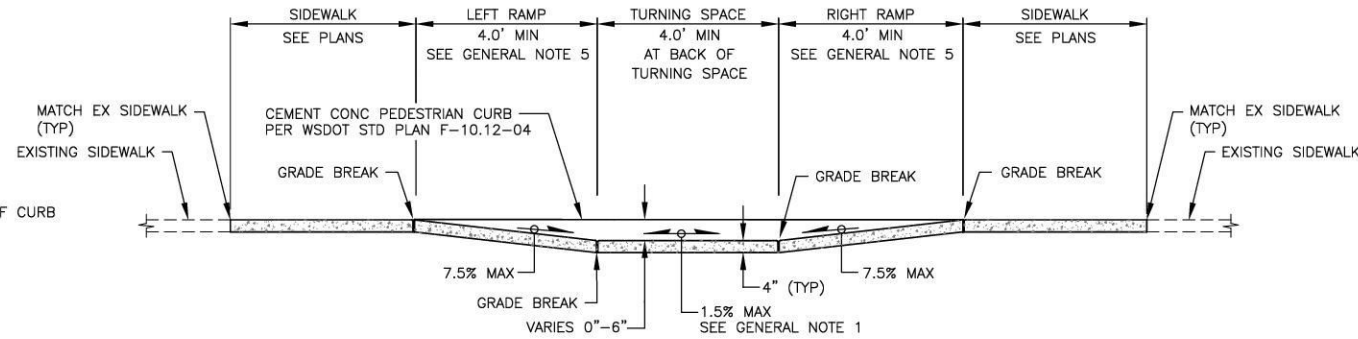
1. THE INTENDED CROSS SLOPE FOR ALL RAMPS AND ALL TURNING SPACES IS 1.5%. DUE TO EXISTING GUTTER AND ROADWAY SLOPES, ACHIEVING 1.5% MAY NOT BE POSSIBLE. CONTRACTOR SHALL CONSTRUCT WITH CROSS SLOPE AS CLOSE TO 1.5% (OR LESS) AS POSSIBLE WITHIN EXISTING CONDITIONS. CROSS SLOPE MUST BE APPROVED BY THE ENGINEER PRIOR TO PLACING CEMENT CONCRETE.
2. AVOID PLACING JUNCTION BOXES OR OTHER OBSTRUCTIONS IN FRONT OF RAMP ACCESS AREAS.
3. REPLACE SIDEWALK PANEL ADJACENT TO CURB RAMP TO NEAREST JOINT BEYOND 5 FEET. THE REPLACEMENT LENGTH SHALL BE SUFFICIENT TO PROVIDE A SMOOTH RUNNING SLOPE AND CROSS SLOPE TRANSITION BETWEEN NEW AND EXISTING SIDEWALK. THE REPLACEMENT LENGTH AND MATCH IN POINT MUST BE APPROVED BY THE ENGINEER PRIOR TO PLACING CEMENT CONCRETE.
4. BACK OF WALK LIMITS VARY FOR EACH CURB RAMP LOCATION, SEE DWG. NO. GR1-GR2 FOR PLAN VIEW FOR EACH CURB RAMP.
5. MINIMUM RAMP LENGTH FOR TYPE PARALLEL RAMPS SHALL BE 4 FEET, WITH A RAMP RUNNING SLOPE NOT TO EXCEED 7.5%. RAMP MAY BE LENGTHENED TO ACHIEVE 7.5% OR LESS SLOPE TO A MAXIMUM LENGTH OF 15 FEET. THE LENGTH AND RUNNING SLOPE OF THE RAMP MUST BE APPROVED BY THE ENGINEER PRIOR TO PLACING CEMENT CONCRETE.
6. SEE DWG. NO. GR1 FOR CURB RAMP LENGTHS. LENGTHS SHALL BE ADJUSTED TO ACHIEVE REQUIRED SLOPES TO ACCOMMODATE EXISTING SITE CONDITIONS. ALL SLOPES AND LENGTHS MUST BE APPROVED BY THE ENGINEER PRIOR TO POURING CEMENT CONCRETE. TO MEET ADA GUIDELINES (AS DEFINED IN THE 2011 PROWAG) A MAXIMUM CROSS SLOPE OF 2.0% IS ALLOWED ON SIDEWALKS AND RAMPS.
7. THE LENGTH AND WIDTH DIMENSIONS SHOWN ON THESE CURB RAMP DETAIL SHEETS SHALL BE MEASURED TO AND FROM THE FINISHED EDGES OF CONCRETE AND EXCLUDING JOINTS.
8. THE BID ITEM "CEMENT CONC. CURB RAMP TYPE PARALLEL" DOES NOT INCLUDE THE ADJACENT CURB & GUTTER, DEPRESSED CURB & GUTTER, PEDESTRIAN CURB, OR SIDEWALKS.
9. CONTRACTOR SHALL BE RESPONSIBLE FOR ADHERING TO ADA REQUIREMENTS (AS DEFINED IN THE 2011 PROWAG) STRICTLY FOR ALL PEDESTRIAN FACILITIES AND TO ENSURE THAT MAXIMUM ALLOWABLE SLOPES ARE NOT EXCEEDED IN ANY LOCATION WITHOUT PRIOR APPROVAL BY THE ENGINEER. CONTACT DESIGNER DURING CONSTRUCTION IF THERE ARE ANY AREAS THAT ADA COMPLIANCE IS NOT POSSIBLE FOR UNFORESEEN REASONS.
10. TURNING SPACE AND RAMP LENGTH MEASUREMENTS SHALL BE MEASURED ALONG THE BACK OF SIDEWALK.



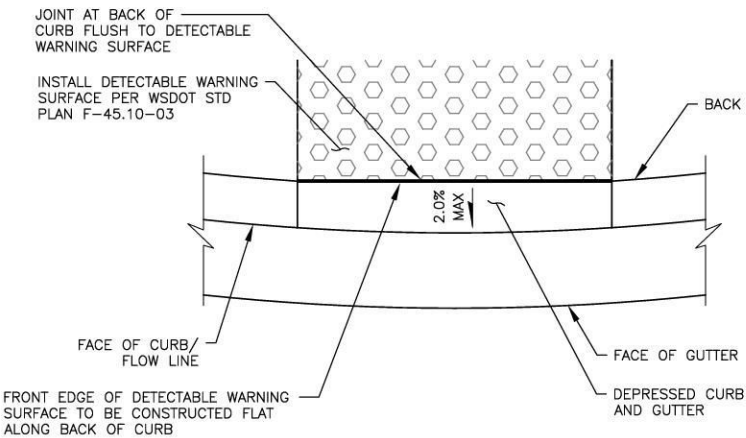
PARALLEL CURB RAMP DETAIL
NTS



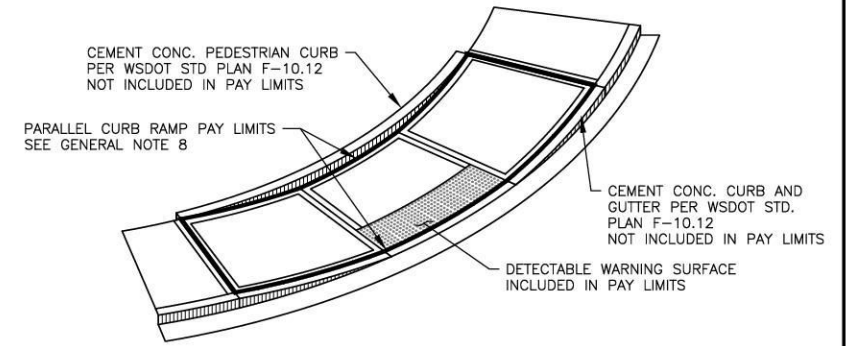
SECTION A-A
NTS



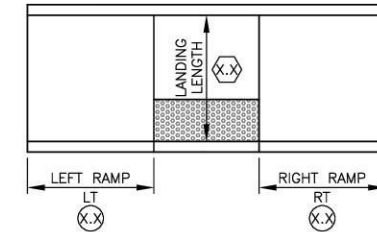
SECTION B-B
NTS



CURB DETAIL
NTS



PARALLEL CURB RAMP PAY LIMITS
NTS



CURB RAMP DIMENSIONS
NTS

TERMINOLOGY KEY

- (X-X) RAMP LENGTH (FEET)
- (X-X) FLARE LENGTH (FEET)
- NORTHING/EASTING ARE TO CENTER OF RAMP AT THE FACE OF CURB



NAVDB8

Apr 06, 2026 - 11:12am hmcmastr X:\Stanwood_City of Projects\20250015 - Stanwood 2025 Prof Surv On-Call\0001 - Depot Park Design\CADD\02 - Plan Sheets\20250015_CRD.dwg Layout Name: CR1

No.	Date	Revision	By	Appr.

PERTEET
2707 COLBY AVENUE, SUITE 900
EVERETT, WA 98201
425.252.7700 | 800.615.9900

811
Know what's below.
Call before you dig.

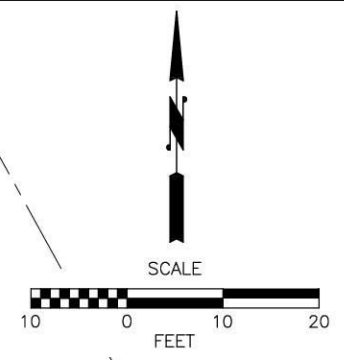
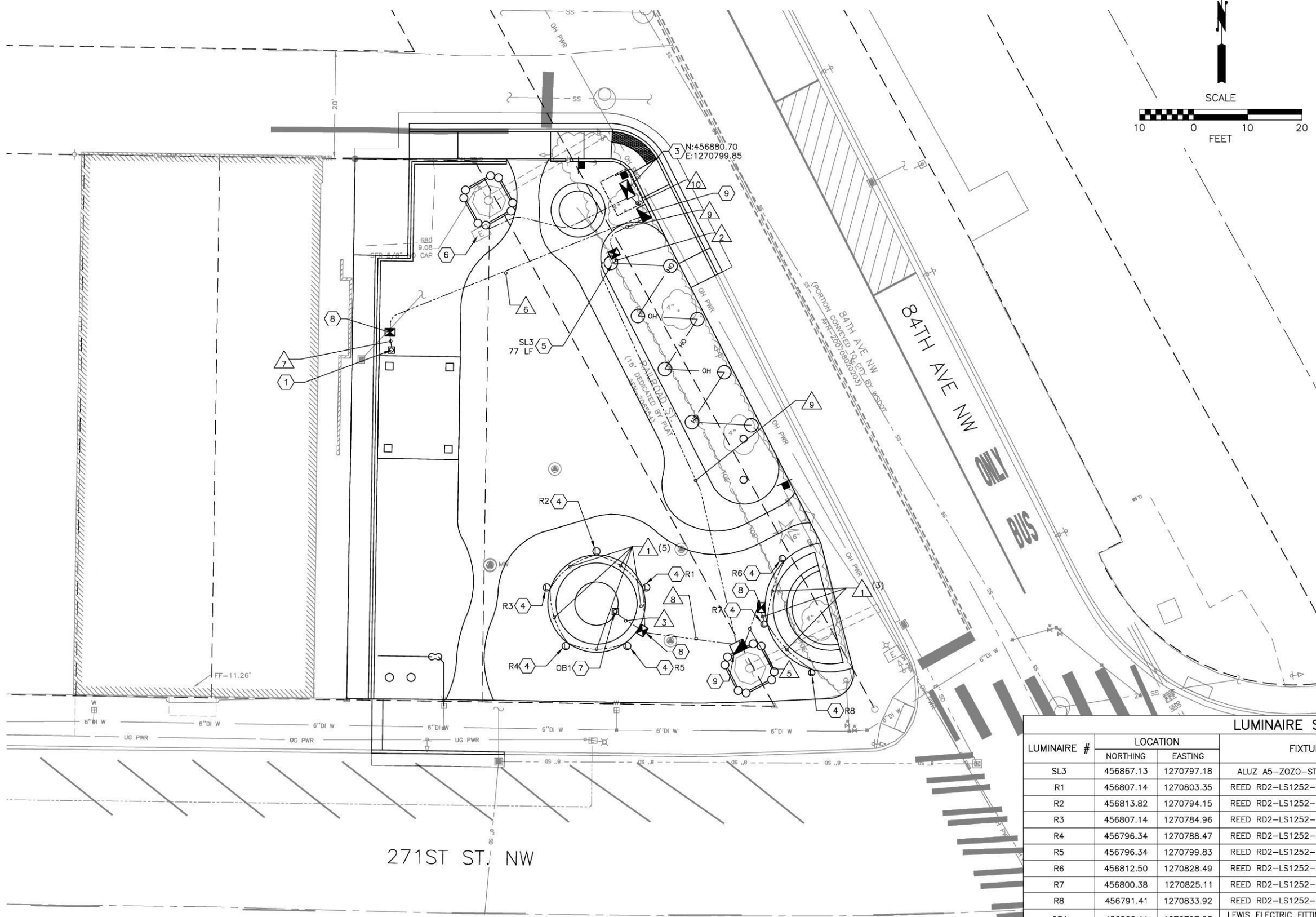
ERIN NICOLE ROULET
STATE OF WASHINGTON
REGISTERED PROFESSIONAL ENGINEER
4-6-2026

Drawn By	Date
MC	4/2026
Designed By	
JR	4/2026
Checked By	
ER	4/2026
Approved By	
ER	4/2026

Project Number	20250015.0001
----------------	---------------

CITY OF STANWOOD
DEPOT PARK
CURB RAMP DETAILS

Drawing No.	CR1
Sheet No.	15
of Total	21



ILLUMINATION NOTES:

- 1 INSTALL ELECTRICAL OUTLET PER DETAIL ON DWG NO. IL3.
- 2 NOT USED.
- 3 CONSTRUCT FOUNDATION PER WSDOT STD PLAN J-10.10, AND INSTALL A TYPE B MODIFIED SERVICE CABINET PER WSDOT STD PLAN J-10.20 AND BREAKER SCHEDULE ON DWG NO. IL2.
- 4 INSTALL RECESSED LIGHTING PER LUMINAIRE SCHEDULE.
- 5 INSTALL STRING LIGHTING PER LUMINAIRE SCHEDULE AND DETAIL ON DWG. NO. IL3.
- 6 SNOHOMISH COUNTY PUD UTILITY POLE SERVICE CONNECTION POINT. CONTRACTOR SHALL CONSTRUCT TRENCH AND FURNISH AND INSTALL CONDUIT AND CONDUCTORS FROM SERVICE TO PUD CONNECTION. CONTRACTOR SHALL COORDINATE WITH PUD TO PROVIDE NEW SERVICE AND CONNECTION PER PUD STANDARDS.
- 7 INSTALL RECESSED OUTLET PER LUMINAIRE SCHEDULE.
- 8 INSTALL TYPE 1 JUNCTION BOX PER WSDOT STD PLAN J-40.10.
- 9 INSTALL TYPE 2 JUNCTION BOX PER WSDOT STD PLAN J-40.10.

LEGEND:

- TYPE I, AND II JUNCTION BOX
- SERVICE CABINET
- ELECTRICAL OUTLET
- RECESSED LIGHTING
- EXISTING JUNCTION BOX
- OVERHEAD STRING LIGHTS
- CONDUIT
- EXISTING PEDESTRIAN LUMINAIRE
- CONDUIT WIRE NOTE
- CONSTRUCTION NOTE

GENERAL NOTES:

- 1. UTILITY LOCATION (DIAL-A-DIG) PRIOR TO CONSTRUCTION WILL BE THE RESPONSIBILITY OF THE CONTRACTOR. CONFLICTS ARE TO BE BROUGHT TO THE ATTENTION OF THE ENGINEER FOR RESOLUTION.
- 2. ALL JUNCTION BOXES AND CONDUIT RUNS SHALL BE INSTALLED AS SHOWN IN THE PLANS. LOCATIONS SHOWN ARE SCHEMATIC. EXACT LOCATIONS TO BE CONFIRMED BY THE ENGINEER. ALL JUNCTION BOXES SHALL HAVE NON-SLIP FRAME AND LID.
- 3. UNLESS OTHERWISE SPECIFIED, ALL PROPOSED ELECTRICAL CONDUIT SHALL BE SCHEDULE 80 PVC.
- 4. SEE DWG NO. IL2 FOR ONE LINE WIRING DIAGRAM, WIRE SCHEDULE, AND BREAKER SCHEDULE.
- 5. EXACT CABINET LAYOUT SHALL BE CONFIRMED BY THE CONTRACTOR, AND APPROVED BY THE ENGINEER PRIOR TO BEGINNING WORK.
- 6. ILLUMINATION CONDUITS TO BE ROUTED AROUND TREE PITS OR OTHER OBJECTS IN PLANTER STRIP.

LUMINAIRE SCHEDULE				
LUMINAIRE #	LOCATION		FIXTURE TYPE	NOTES
	NORTHING	EASTING		
SL3	456867.13	1270797.18	ALUZ A5-ZOZO-STN-12"-27K-GSF-WET	INSTALL PER DETAIL ON DWG NO. IL3
R1	456807.14	1270803.35	REED RD2-LS1252-09D 827 RB DY 09_BL	INSTALL PER DETAIL ON DWG NO. IL3
R2	456813.82	1270794.15	REED RD2-LS1252-09D 827 RB DY 09_BL	INSTALL PER DETAIL ON DWG NO. IL3
R3	456807.14	1270784.96	REED RD2-LS1252-09D 827 RB DY 09_BL	INSTALL PER DETAIL ON DWG NO. IL3
R4	456796.34	1270788.47	REED RD2-LS1252-09D 827 RB DY 09_BL	INSTALL PER DETAIL ON DWG NO. IL3
R5	456796.34	1270799.83	REED RD2-LS1252-09D 827 RB DY 09_BL	INSTALL PER DETAIL ON DWG NO. IL3
R6	456812.50	1270828.49	REED RD2-LS1252-09D 827 RB DY 09_BL	INSTALL PER DETAIL ON DWG NO. IL3
R7	456800.38	1270825.11	REED RD2-LS1252-09D 827 RB DY 09_BL	INSTALL PER DETAIL ON DWG NO. IL3
R8	456791.41	1270833.92	REED RD2-LS1252-09D 827 RB DY 09_BL	INSTALL PER DETAIL ON DWG NO. IL3
OB1	456802.11	1270797.03	LEWIS ELECTRIC FITTINGS COMPANY QB-1-SP OUTLET BOX	INSTALL PER SPECIAL PROVISION 8-20.



Apr 06, 2026 - 12:18pm ercolledge, X:\Stanwood, City of\Projects\20250015 - Stanwood 2025 Prof Stan On-Call\001 - Depot Park Design\CADD\02 - Plan Sheets\20250015_IL.dwg Layout Name: IL1

No.	Date	Revision	By	Appr.

PERTEET
 2707 COLBY AVENUE, SUITE 900
 EVERETT, WA 98201
 425.252.7700 | 800.615.9900

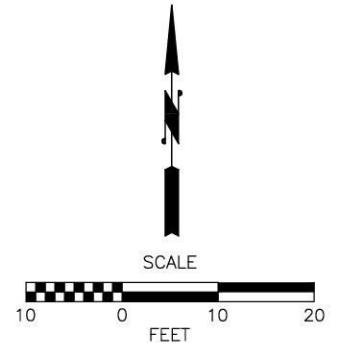
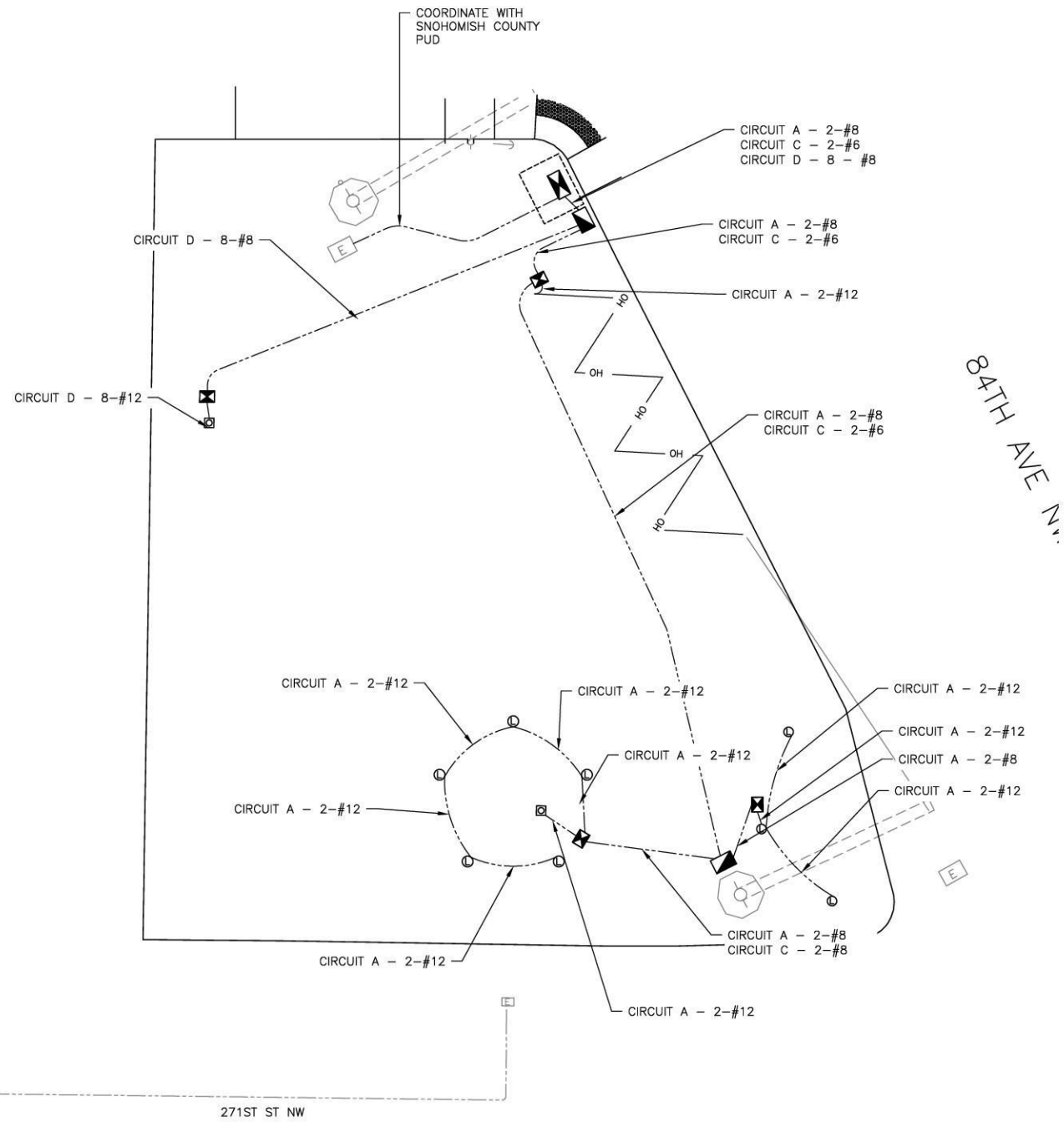
811
 Know what's below.
 Call before you dig.

Drawn By	Date
MC	4/2026
Designed By	
ZM	4/2026
Checked By	
ER	4/2026
Approved By	
ER	4/2026

CITY OF STANWOOD
 DEPOT PARK
**ILLUMINATION AND ELECTRICAL
 PLANS AND DETAILS**

Drawing No.	IL1
Sheet No.	16
of Total	21

BREAKER SCHEDULE TYPE B MODIFIED SERVICE CABINET					
CIRCUIT	DESCRIPTION	BREAKER RATING	CONTACTOR RATING	VOLTAGE	LOAD (KVA)
	MAIN	150 AMP	N/A		
A	PARKING LIGHTING	15 AMP	15	120	0.27
C	HOLIDAY TREE GFCI	20 AMP	N/A	120	2.40
D1	GAZEBO GFCI 1	20 AMP	N/A	120	1.80
D2	GAZEBO GFCI 2	20 AMP	N/A	120	1.80
D3	GAZEBO GFCI 3	20 AMP	N/A	120	1.80
D4	GAZEBO GFCI 4	20 AMP	N/A	120	1.80
E	PHOTOCONTROL	15 AMP	N/A	120	0.00
F	CABINET GFCI	20 AMP	N/A	120	1.80
G	SPARE	15 AMP	N/A	120	0.00
				PEAK	11.67
				CONTINUOUS	0.27



ILLUMINATION WIRING SCHEDULE						
#	CONDUIT SIZE	CIRCUIT	ILLUMINATION	BARE GROUND	ACTUAL FILL (IN)	26% FILL (IN)
1*	1/2"	A	2-#12	1-#12	0.078	0.073
2	1"	A	2-#12	1-#12	0.078	0.22
3	1"	C	2-#12	1-#12	0.078	0.22
5	1"	A	2-#8	1-#8	0.168	0.22
6	2"	D	8-#8	1-#8	0.264	0.86
7	2"	D	8-#12	1-#8	0.28	0.86
8	2"	A	2-#8	1-#8	0.28	0.86
		C	2-#8			
9	2"	A	2-#8	1-#8	0.314	0.86
		C	2-#6			
10	3"	A	2-#8	1-#8	0.426	1.89
		C	2-#6			
		D	2-#8			

*INSTALL CONDUIT PER MANUFACTURERS RECOMMENDATION.

ONE-LINE DIAGRAM



Apr 06, 2026 - 12:18pm ercolledge, X:\Stanwood, City of\Projects\20250015 - Stanwood 2025 Prof Serv On-Call\001 - Depot Park Design\CADD\02 - Plan Sheets\20250015_IL.dwg Layout Name: IL2

No.	Date	Revision	By	Appr.

PERTEET
 2707 COLBY AVENUE, SUITE 900
 EVERETT, WA 98201
 425.252.7700 | 800.615.9900

811
 Know what's below.
 Call before you dig.

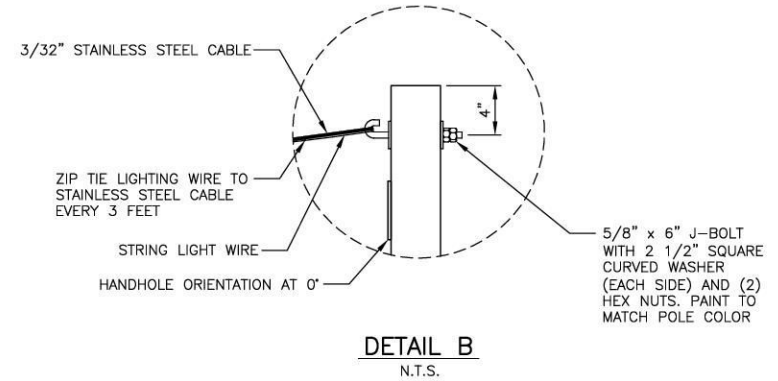
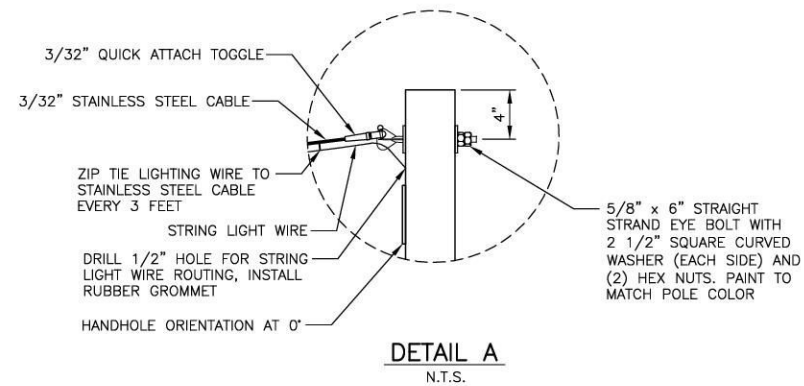
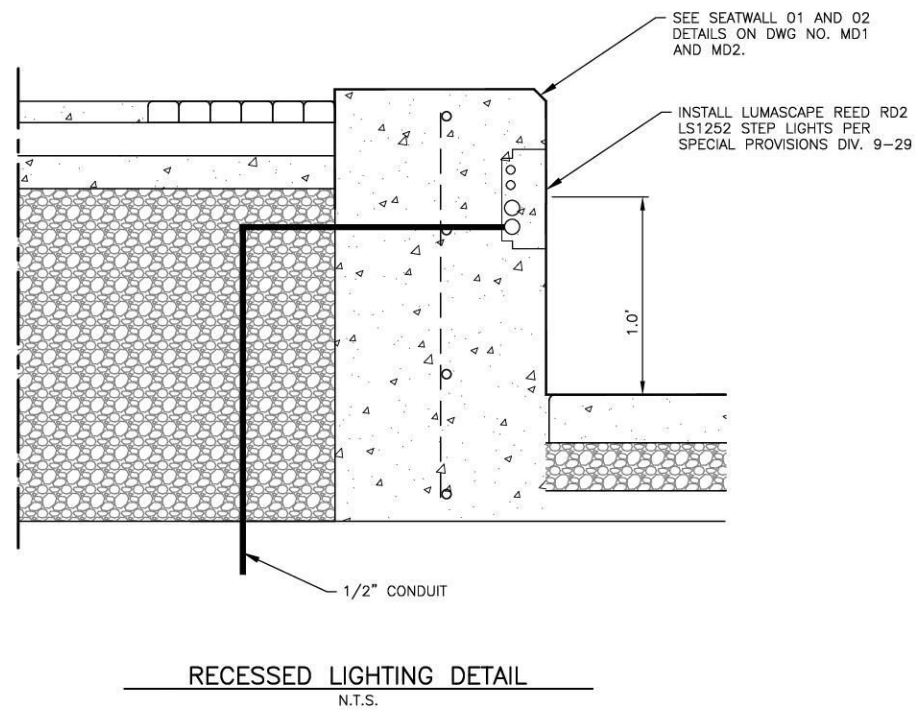
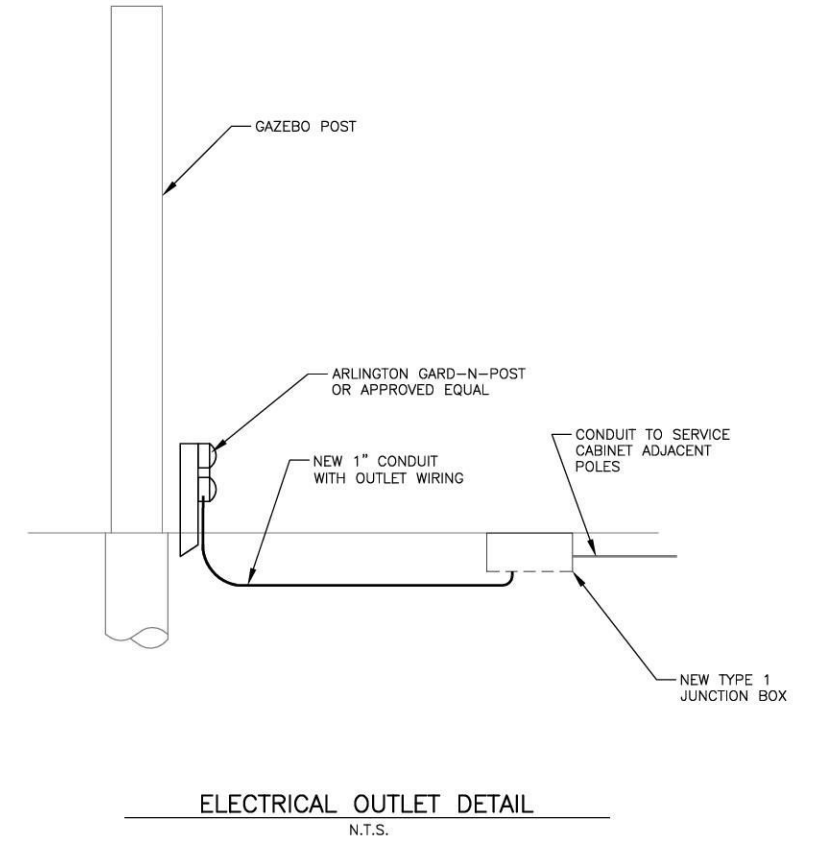
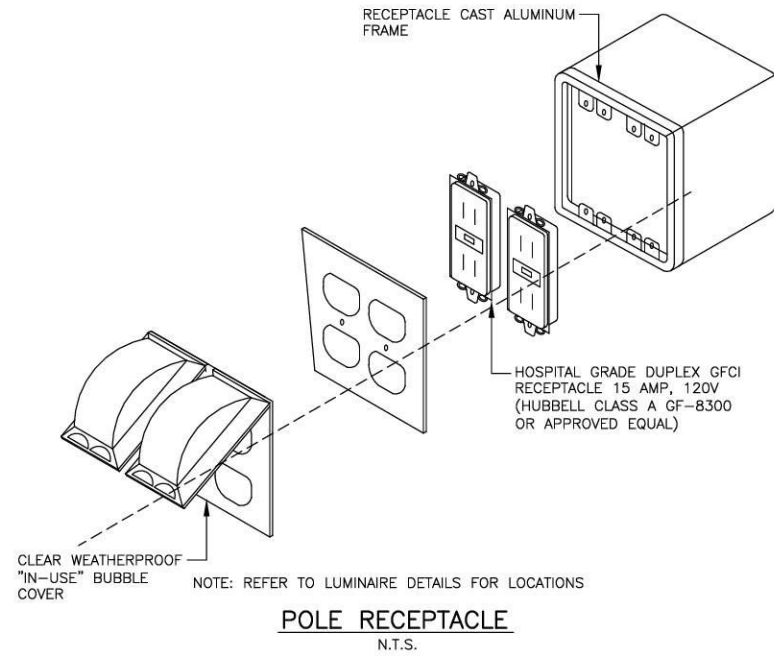
ERIN NICOLE ROUTE
 STATE OF WASHINGTON
 REGISTERED PROFESSIONAL ENGINEER
 21038271
 4-6-2026

Drawn By	Date
MC	4/2026
Designed By	
ZM	4/2026
Checked By	
ER	4/2026
Approved By	
ER	4/2026

Project Number	20250015.0001
----------------	---------------

CITY OF STANWOOD
 DEPOT PARK
**ELECTRICAL SCHEDULES
 AND ONE LINE DIAGRAM**

Drawing No.	IL2
Sheet No.	17
of Total	21



Apr 06, 2026 - 12:18pm ercolledge, X:\Stanwood, City of\Projects\20250015 - Stanwood 2025 Prof Serv On-Call\001 - Depot Park Design\CADD\02 - Plan Sheets\20250015_IL.dwg Layout Name: IL3

No.	Date	Revision	By	Appr.

PERTEET
2707 COLBY AVENUE, SUITE 900
EVERETT, WA 98201
425.252.7700 | 800.615.9900

811
Know what's below.
Call before you dig.

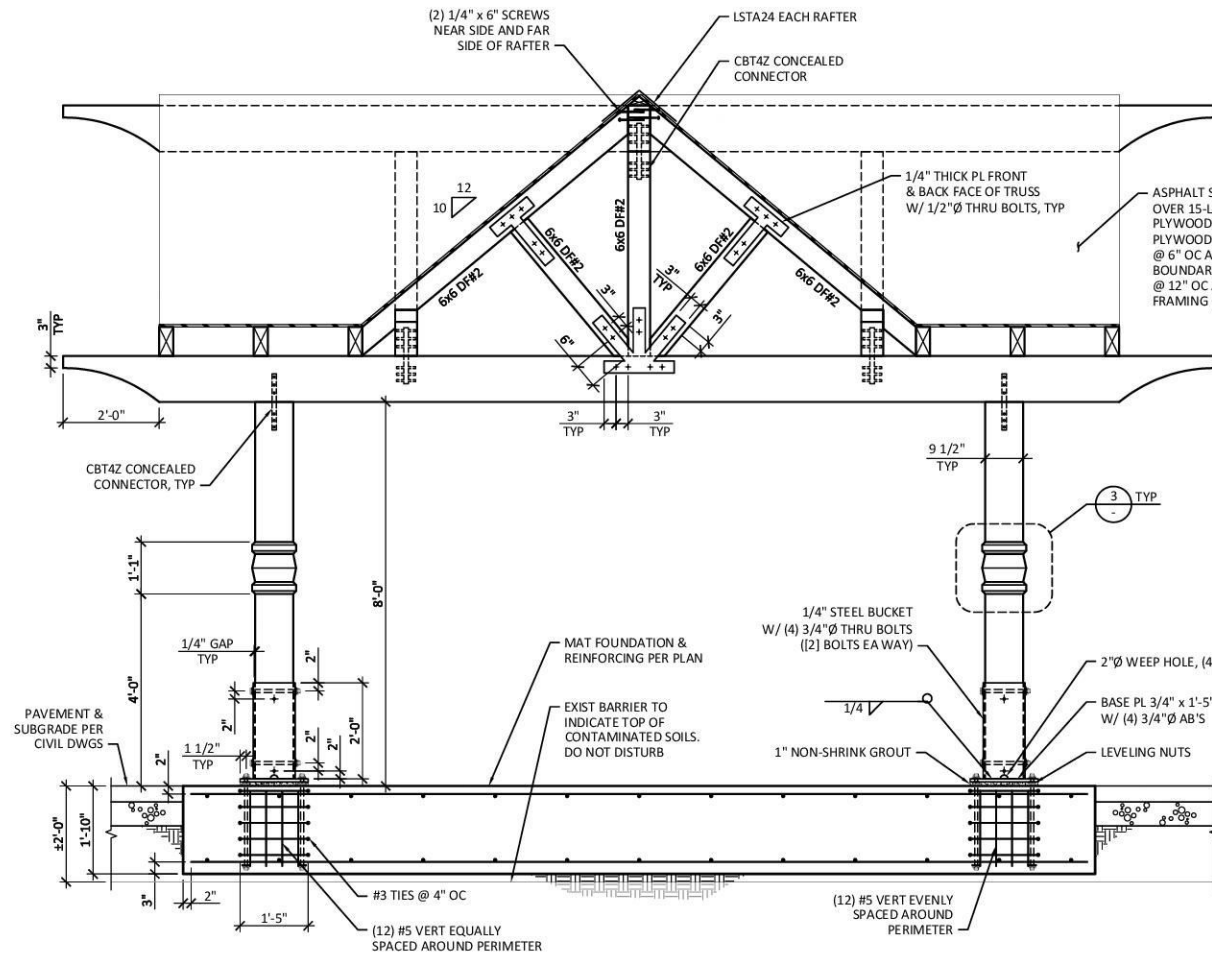
ERIN NICOLE ROUTE
STATE OF WASHINGTON
REGISTERED
PROFESSIONAL ENGINEER
4-6-2026

Drawn By	Date
MC	4/2026
Designed By	
ZM	4/2026
Checked By	
ER	4/2026
Approved By	
ER	4/2026

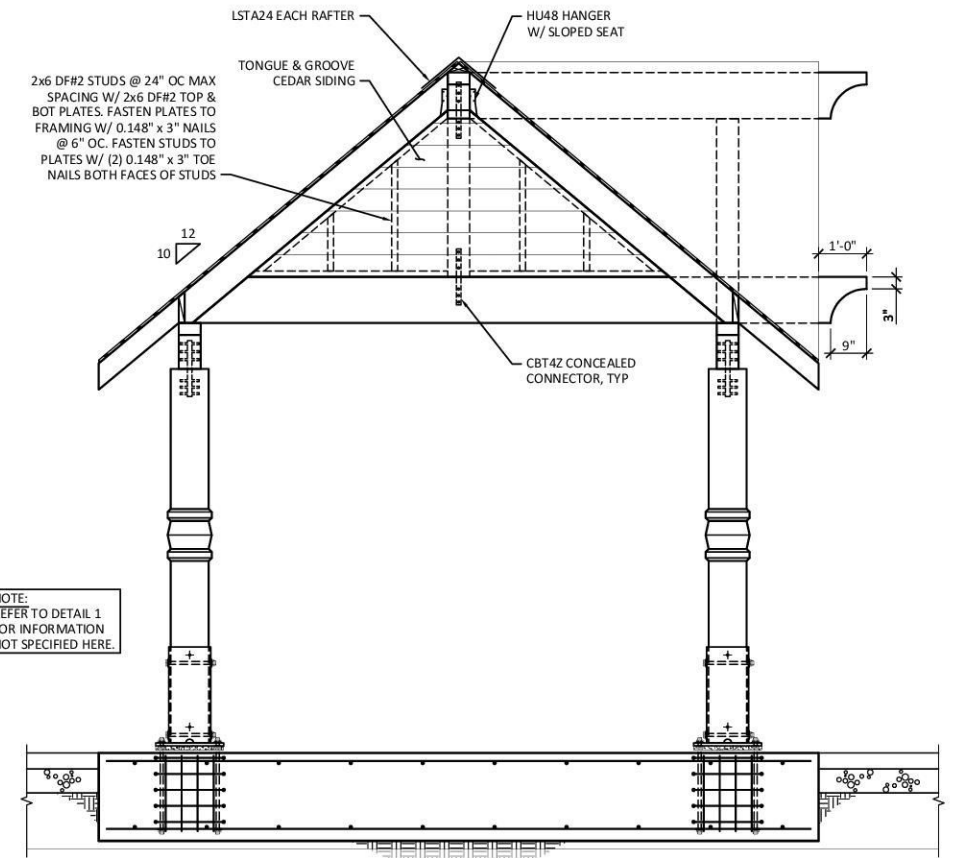
Project Number	20250015.0001
----------------	---------------

CITY OF STANWOOD
DEPOT PARK
ELECTRICAL DETAILS

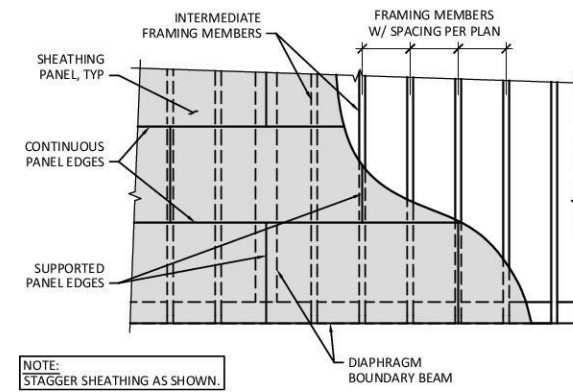
Drawing No.	IL3
Sheet No.	18
of Total	21



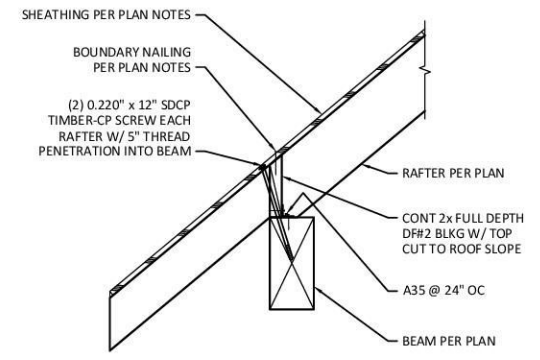
1 FRONT ELEVATION



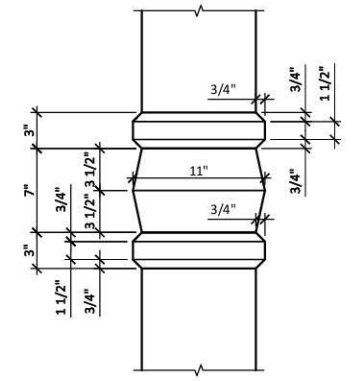
2 SIDE ELEVATION



3 TYPICAL ROOF SHEATHING DETAIL



4 RAFTER CONNECTION DETAIL



5 SPINDLE DETAIL

Mar 05, 2026 - 8:12am jmmesp_RL_2025 projects\25451 City of Stanwood Depot Park Shelter Structural\Drafting\XX-XX-XX CURRENT\SS.1.dwg Layout Name: Paper

No.	Date	Revision	By	Appr.
	03/05/26	PERMIT SUBMITTAL	JCP	MTM

E.G. ENGINEERING
 250 4TH AVE. S., SUITE 200
 EDMONDS, WASHINGTON 98020
 PHONE (425) 778-8500
 FAX (425) 778-5538

811
 Know what's below.
 Call before you dig.

TIMOTHY MAHER
 REGISTERED PROFESSIONAL ENGINEER
 05/05/26

Drawn By	Date
JCP	03/05/26
Designed By	
KS	03/05/26
Checked By	
MTM	03/05/26
Approved By	
MTM	03/05/26

CITY OF STANWOOD
 DEPOT PARK
 SHELTER ELEVATIONS
 AND DETAILS

Drawing No.	S3.1
Sheet No.	21
of Total	21